

nova

TOWNHOME COLLECTION  
IN ATHERSTONE, MELTON





## THE SOHO LIVING *difference*

SOHO Living is a contemporary residential home builder and property developer focused on building architecturally designed homes and townhomes that you will be proud to call your own. Our mission is to create communities and dynamic spaces where individuals can grow and thrive.

Thinking outside the box is what we do best, which is why our developments always result in stylish and versatile homes in neighbourhoods that are built to last. Regardless of your stage in life, there's a SOHO Living development that's right for you.

When you choose SOHO Living, you are assured a high standard of service that is unparalleled in the industry. We pride ourselves on the exceptional quality of our designs, builds and finishes that are guaranteed to exceed homebuyer expectations every time.

By investing in a SOHO Living home, you are investing in your best possible future. With a wide selection of townhomes and homes available, we can make your home ownership dreams a reality. Find out for yourself why SOHO Living are one of Australia's fastest growing builders and experience firsthand the SOHO Living difference.



# nova

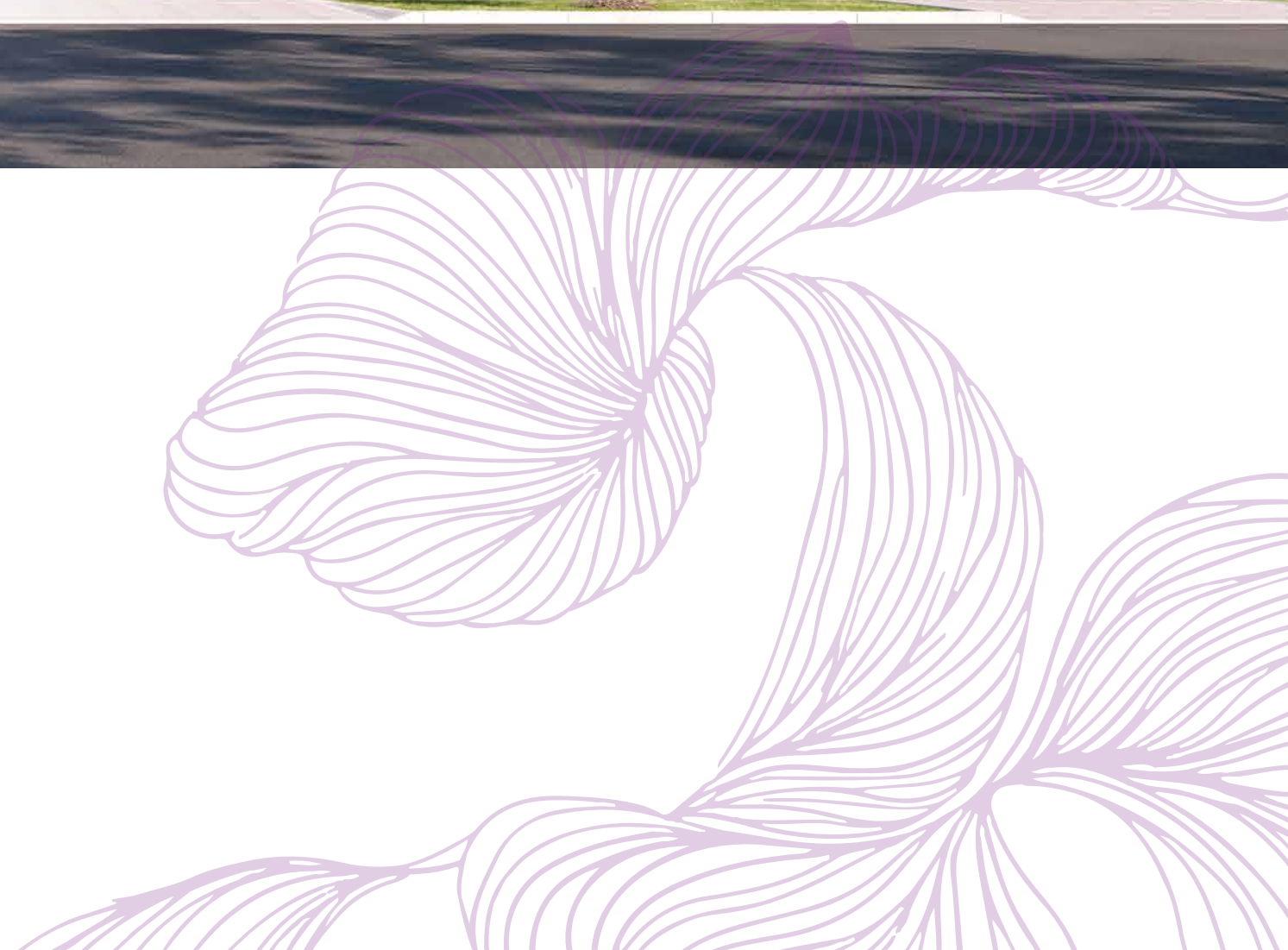
TOWNHOME COLLECTION



Artist Impression

## BUILD YOUR FUTURE AT *Atherstone*

Perfectly positioned just 40 kilometres west of Melbourne city and home to the future Cobblebank CBD. Atherstone offers residents a unique, convenient and ever evolving lifestyle experience.







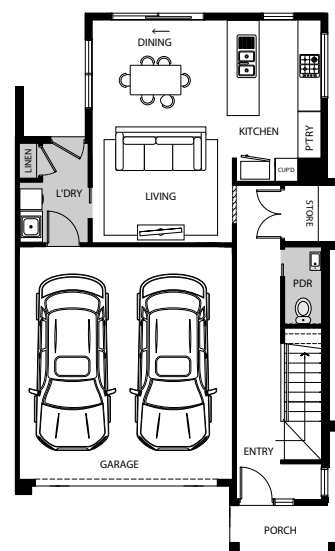
## BERKLEY CNR

WITH REAR PERGOLA

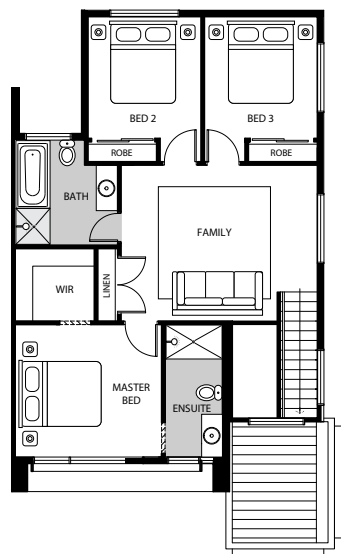
TYPE E | 20 SQ

LOT 3608

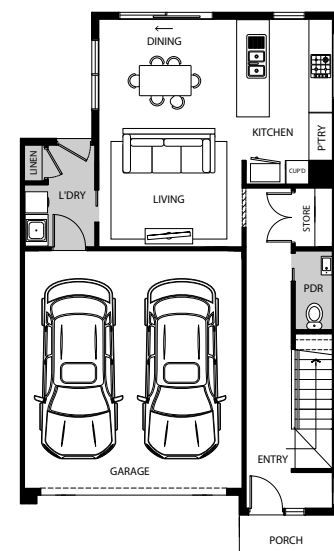
3 2.5 2



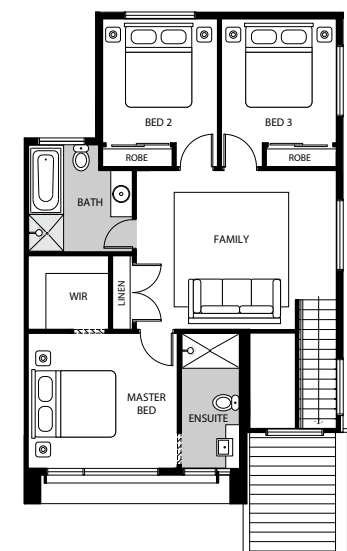
GROUND FLOOR



FIRST FLOOR



GROUND FLOOR



FIRST FLOOR



## BERKLEY CNR

TYPE E | 20 SQ

LOT 3614

3 2.5 2



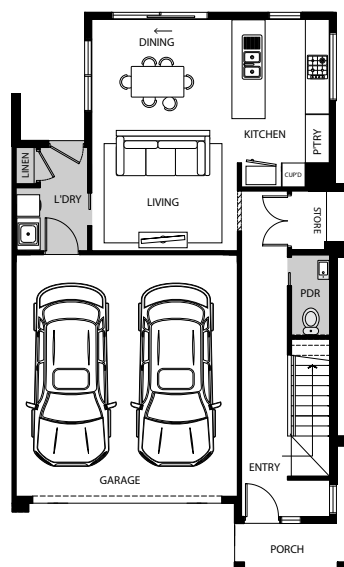
## BERKLEY CNR

WITH REAR PERGOLA

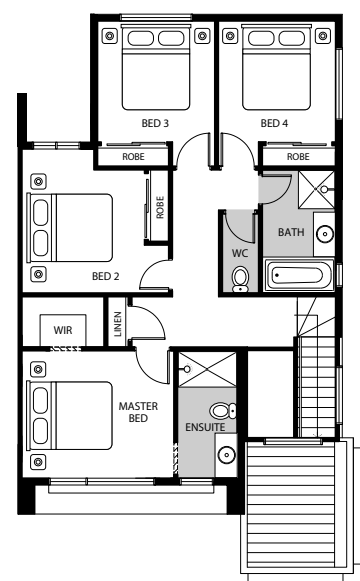
TYPE E | 20 SQ

LOT 3608

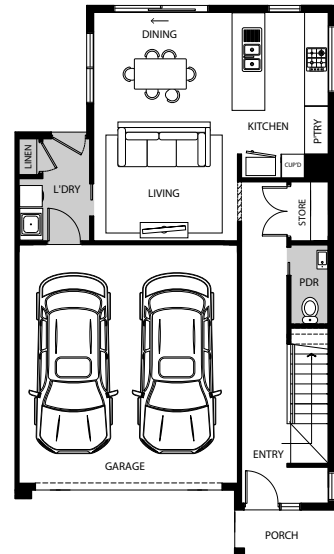
4 2.5 2



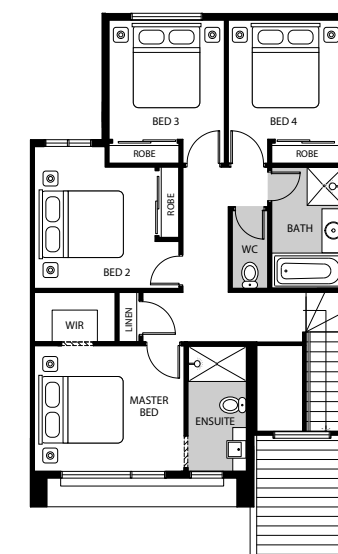
GROUND FLOOR



FIRST FLOOR



GROUND FLOOR



FIRST FLOOR



## BERKLEY CNR

TYPE E | 20 SQ

LOT 3614

4 2.5 2

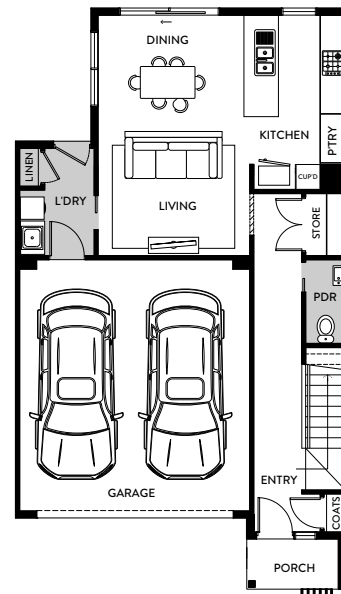


## BERKLEY

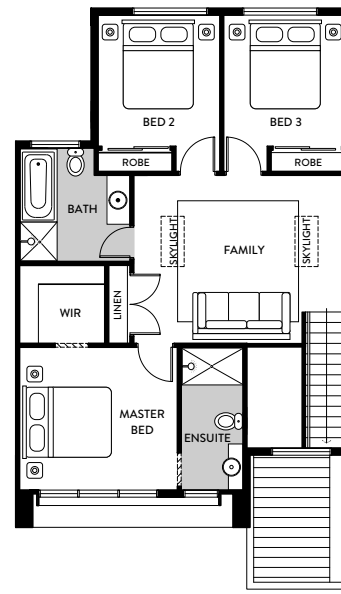
TYPE C | 20 SQ

LOT 3610, 3611 & 3612

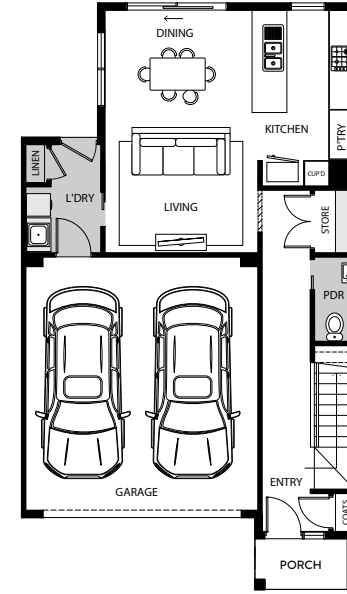
3 2.5 2



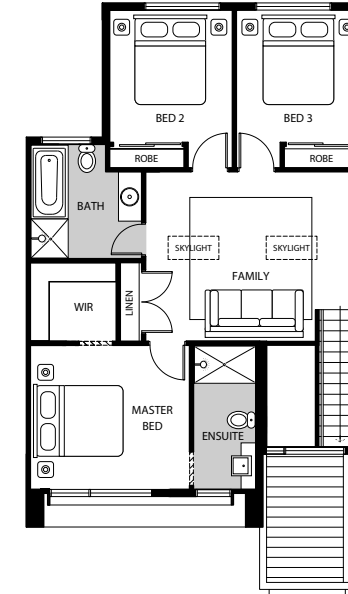
GROUND FLOOR



FIRST FLOOR



GROUND FLOOR



FIRST FLOOR



## BERKLEY

TYPE D | 20 SQ

LOT 3609 & 3613

3 2.5 2

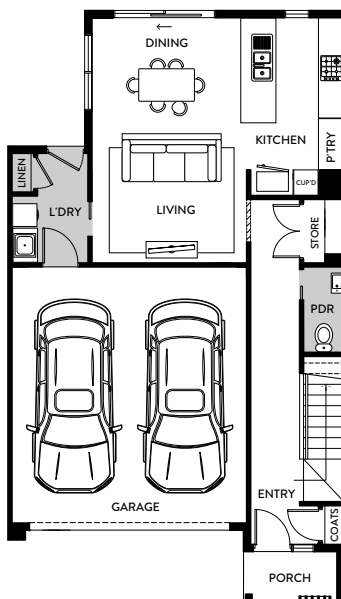


## BERKLEY

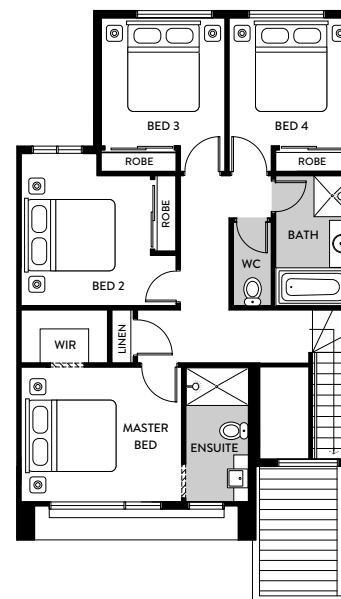
TYPE C | 20 SQ

LOT 3610, 3611 & 3612

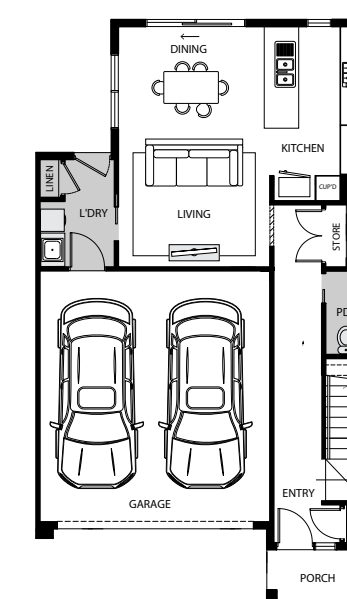
4 2.5 2



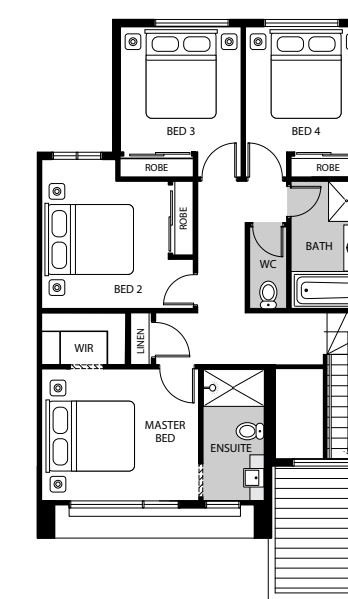
GROUND FLOOR



FIRST FLOOR



GROUND FLOOR



FIRST FLOOR



## BERKLEY

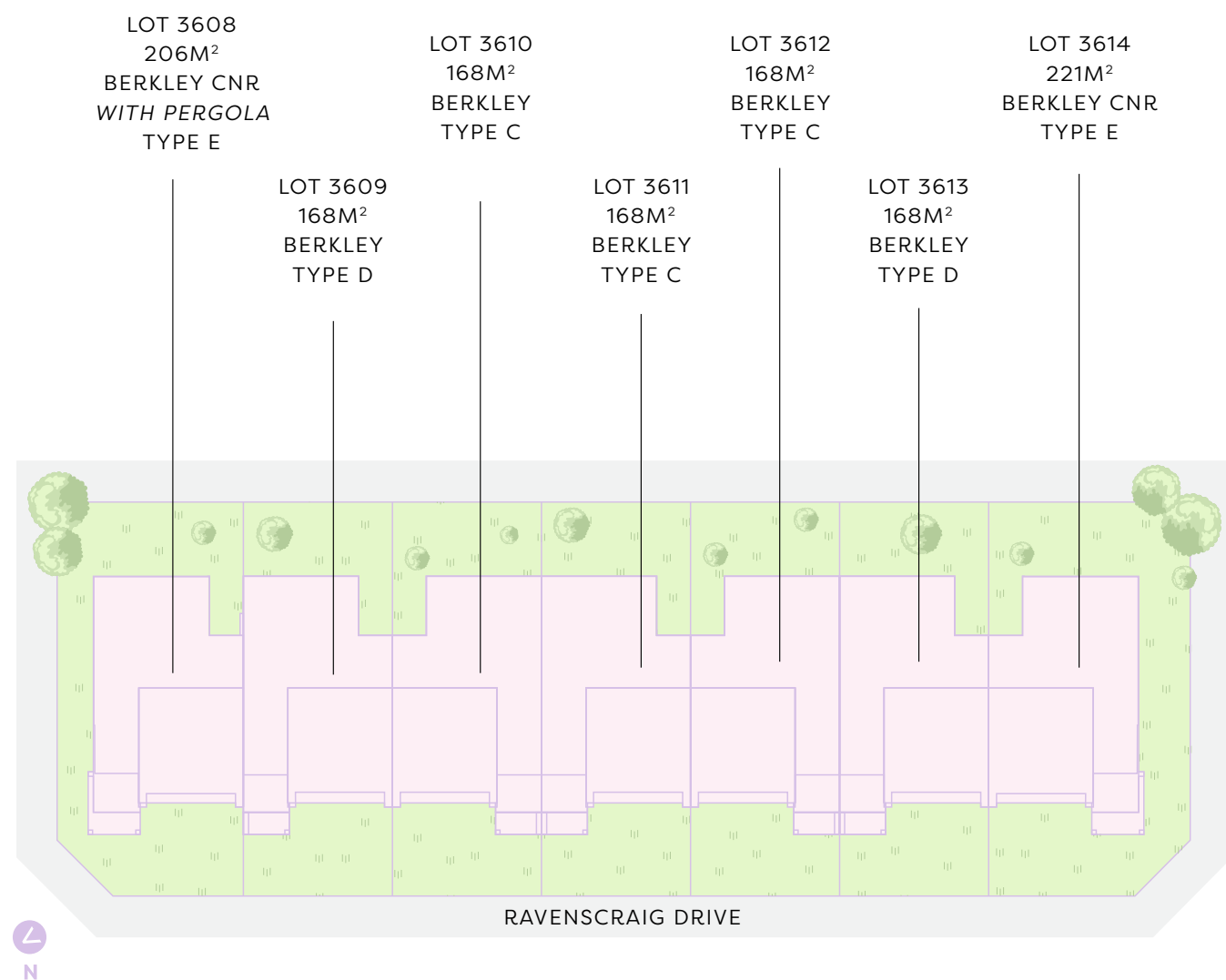
TYPE D | 20 SQ

LOT 3609 & 3613

4 2.5 2



# SITE Plan



Artist's Impression.

This brochure is intended to provide general information only and does not constitute an offer to supply. All photographs, plans, maps and drawings are illustrative only and may not be to scale. Lot size dimensions, easements, landscape treatments, final road layout, public utility and service infrastructure locations and zoning are subject to change and conditional on authority approval. Prospective buyers should make and rely on their own enquiries, refer to their contract for full terms and conditions, and obtain independent advice including legal and financial advice. CDB-U 50036.



All images are for illustrative purposes only.

# SOHO LIVING TURNKEY *inclusions*

IT'S ALL  
INCLUDED!



All images are for illustrative purposes only.

## INTERNAL FEATURES

**Ceiling Height:** 2590mm ceiling height (nominal) to single storey with 75mm cove cornice. 2590mm ceiling height (nominal) to ground floor of double storey homes, 2440mm ceiling height (nominal) to first floor, 75mm cove cornice throughout.

**Room Doors:** Flush panel Honeycomb Core 2040mm high to single storey, 2040mm high to ground floor and first floor of double storey.

**Room Door Furniture:** Passage set. Provide Alba Chrome levers through Chrome finish.

**Mouldings:** Skirtings – 67x18mm square edge primed MDF. Architraves – 67x18mm square edge primed MDF.

**Plaster:** Ceiling Plaster. 10mm plasterboard finish

**Wall Plaster:** Plasterboard 10mm thick. Water resistant plasterboard to Ensuite, Bathroom and above Laundry trough.

## PAINT

**Internal and External:** Two coats.

**Woodwork and Skirting:** Two coats.

## HEATING

Panel heating unit installed to living areas and bedrooms (excludes wet areas and areas with split systems) as per manufacturers/suppliers recommendations for home size.

## HOT WATER SYSTEM

Hot water unit in accordance with estate design guidelines.

## KITCHEN

Fisher & Paykel oven 600mm.  
Fisher & Paykel cooktop 600mm 4 burner stainless steel gas cooktop.  
Fisher & Paykel rangehood 600mm stainless steel.  
Fisher & Paykel dishwasher 600mm.

**Sink:** Stainless steel double bowl sink.

**Tap:** Mixer gooseneck in chrome finish.

**Bench Top:** Engineered stone benchtop 20mm. Choose colour from SOHO Living colour scheme.

**Splashback:** Mirror. Choose colour from SOHO Living colour scheme.

## BATHROOM, ENSUITE, POWDER ROOM & WC

**Mirror:** Polished edges to full width of vanities sitting on 200mm tile splashback.

**Basin:** Ceramic Caroma round basin. No tap hole low profile square inset basin (white), chrome waste 1 tap hole/overflow.

**Vanity Unit:** Floating vanity unit on tiled pedestal.

**Bench Top:** Engineered stone benchtop 20mm. Choose colour from SOHO Living colour scheme.

**Bath:** Caroma acrylic bath (white) in tiled podium. (Design Specific)

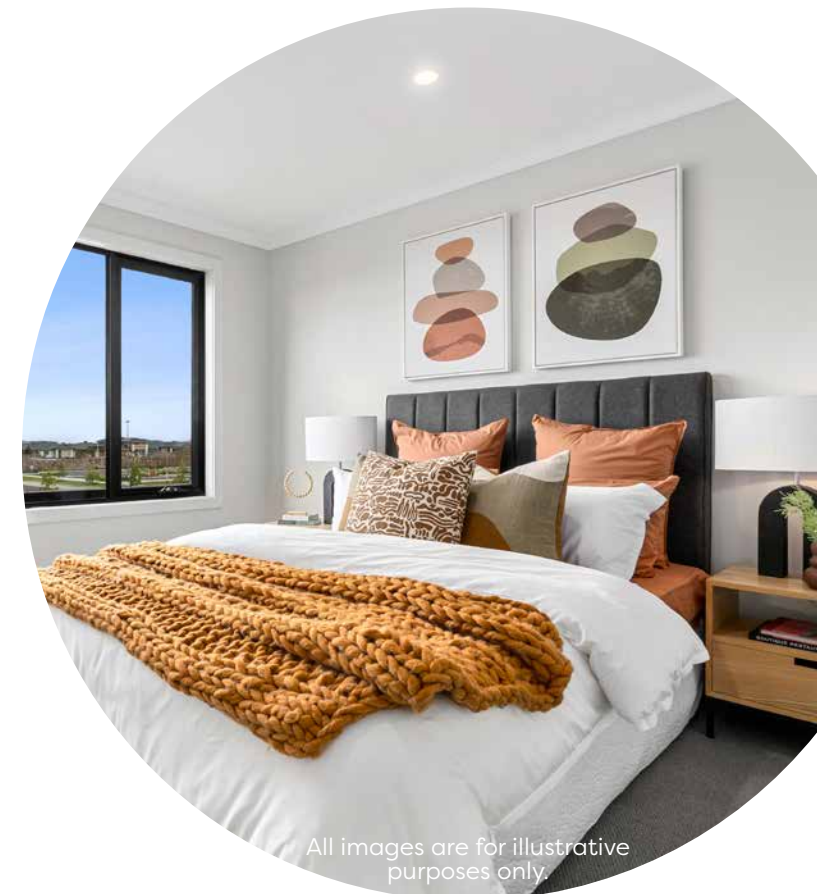
**Shower Bases:** Ceramic tiled shower base. Selection from SOHO Living colour scheme range with Stainless Steel Centre Waste.

**Shower Screens:** 1950mm high semi frameless with pivot door and clear laminated glass.

**Taps and Outlets:** Ensuite – Shower hand shower on rail. Bathroom Shower – Shower hand shower on rail. Bath (Wall Mounted) – Straight wall bath outlet and wall mixer. Basin (Wall Mounted) – Wall mixer.

**Accessories:** Toilet roll holders chrome and double towel rails.

**Toilet Suite:** Caroma toilet suite in white with soft close seat.



All images are for illustrative purposes only.

## LAUNDRY

**Trough:** Caroma 45 litre single inset bowl stainless steel without top bypass.

**Base Cupboard:** 800mm wide fully lined modular cabinet, refer to working drawings.

**Bench Top:** Laminate with square edge.

**Tapware:** Sink mixer in chrome finish.

## ELECTRICAL

**Internal Light Points:** Recessed LED downlight in white non-metallic polyamide housing with diffuser.

**External Light Points:** (2 No) flood light wall mounted light fitting.

**Power Points:** White surround, double power points throughout excluding dishwasher, microwave and refrigerator provision.

**Smoke Detector:** Hardwired with battery backup.

**Exhaust Fans:** Above all showers not opening to outside air, 250mm with self-sealing air flow draft stoppers.



All images are for illustrative purposes only.



**TV Points:** To Family and Master Bedroom.

---

**Telephone Point:** To Kitchen and Master Bedroom.

---

**Safety Switch:** Residual Current Devices safety switch and circuit breakers to meter box.

---

PLUMBING

(2 No) garden taps, one located to the front water meter and one adjacent the external Laundry door.

---

TILING

**Ceramic Floor Tiles:** Selected from SOHO Living colour scheme 400x400mm to Laundry, Ensuite, Bathroom, WC, Internal Courtyard and Powder room.

---

**Ceramic Wall Tiles:** Selected from SOHO Living colour scheme 400x400mm to Laundry, Ensuite, Bathroom, WC, Powder room, shower recesses and above bath.

---

FLOOR COVERINGS

**Carpet:** Selected from SOHO Living colour scheme to Bedrooms, WIR, Activity and Staircase.

---

**Timber Laminate:** Selected from SOHO Living colour scheme timber look laminate flooring to Entry, Kitchen, WIP, Meals, Family, Living, Rear Hallway, Lounge and Study.

---

STORAGE

**Shelving:** Robes – One white melamine shelf and hanging rail.  
Walk in Robe – One white melamine shelf and hanging rail.  
Pantry/Linen – Four white melamine shelves.  
Broom – One white melamine shelf.

---

**Robe Doors:** Single Storey – 2040mm high flush panel hinged doors.

---

STAIRS (DOUBLE STOREY HOMES)

Plaster dwarf walls to stairs and void areas with painted timber handrail (refer to staircase layout).

---

CAR ACCOMMODATION

**Garage Door:** Colorbond sectional door in flat line profile.

---

**Remote Control:** Remote control unit to front garage door with 2 handsets.

---

OUTDOOR

**Landscaping:** Garden and plants to the front and rear. Instant turf to rear yard. Or as per landscape design on drawings.

---

**Fencing:** 1800mm high timber paling/Colorbond including wing fence and gate to suit estate design covenants.

---

**Paving:** Coloured concrete to driveway and front path.

---

**Letterbox:** Pre cast concrete letterbox with colour to match house.

---

**Clothesline:** Fold out clothesline in rear yard.

---



SOHO  
LIVING  
COLOUR  
schemes



All images are for illustrative purposes only.

COLOUR SCHEME 1



- 1 2590mm Ceilings to ground floor
- 2 Fisher & Paykel 600mm Rangehood & cooktop, 600mm Fisher & Paykel Oven
- 3 Fisher & Paykel Dishwasher
- 4 20mm Caesarstone benchtop with waterfall edge (Osprey)
- 5 200mm Gooseneck tap & 1.75L sink insert
- 6 Premium Splashback (Silver mirror)
- 7 Overhead laminex cupboards (Nocturne Oak)
- 8 Laminex cabinetry (Nocturne Oak)
- 9 Quality Timber Laminate Flooring (Rye)
- 10 LED Downlights
- 11 Watty Paint



## COLOUR SCHEME 2



- 1 2590mm Ceilings to ground floor
- 2 Fisher & Paykel 600mm Rangehood & cooktop, 600mm Fisher & Paykel Oven
- 3 Fisher & Paykel Dishwasher
- 4 20mm Essastone benchtop with waterfall edge (Nickel)
- 5 200mm Gooseneck tap & 1.75L sink insert
- 6 Premium Splashback (Grey mirror)
- 7 Overhead laminex cupboards (Oyster Grey)
- 8 Laminex cabinetry (Oyster Grey)
- 9 Quality Timber Laminate Flooring (Buckwheat)
- 10 LED Downlights
- 11 Wattyl Paint

## COLOUR SCHEME 4



- 1 2590mm Ceilings to ground floor
- 2 Fisher & Paykel 600mm Rangehood & cooktop, 600mm Fisher & Paykel Oven
- 3 Fisher & Paykel Dishwasher
- 4 20mm Caesarstone benchtop with waterfall edge (Oyster)
- 5 200mm Gooseneck tap & 1.75L sink insert
- 6 Premium Splashback (White Penny round)
- 7 Overhead laminex cupboards (Rural Oak)
- 8 Laminex cabinetry (Storm Cloud-140)
- 9 Quality Timber Laminate Flooring (Rye)
- 10 LED Downlights
- 11 Wattyl Paint

## COLOUR SCHEME 3

- 1 2590mm Ceilings to ground floor
- 2 Fisher & Paykel 600mm Rangehood & cooktop, 600mm Fisher & Paykel Oven
- 3 Fisher & Paykel Dishwasher
- 4 20mm Caesarstone benchtop with waterfall edge (Osprey)
- 5 200mm Gooseneck tap & 1.75L sink insert
- 6 Premium Splashback (Grey mirror)
- 7 Overhead laminex cupboards (Nocturne Oak)
- 8 Laminex cabinetry (Nocturne Oak)
- 9 Quality Timber Laminate Flooring (Rustic Buckwheat)
- 10 LED Downlights
- 11 Wattyl Paint



## COLOUR SCHEME 5

- 1 2590mm Ceilings to ground floor
- 2 Fisher & Paykel 600mm Rangehood & cooktop, 600mm Fisher & Paykel Oven
- 3 Fisher & Paykel Dishwasher
- 4 20mm Caesarstone benchtop with waterfall edge (Snow)
- 5 200mm Gooseneck tap & 1.75L sink insert
- 6 Premium Splashback
- 7 Overhead laminex cupboards (Bleached Elm)
- 8 Laminex cabinetry (Calm White)
- 9 Quality Timber Laminate Flooring (Rustic Oatmeal)
- 10 LED Downlights
- 11 Wattyl Paint





BUILD YOUR  
FUTURE AT  
*Atherstone*

Perfectly positioned just 40 kilometres west of Melbourne city and neighbouring the future Cobblebank CBD. Atherstone offers residents a unique, convenient and ever evolving lifestyle experience.

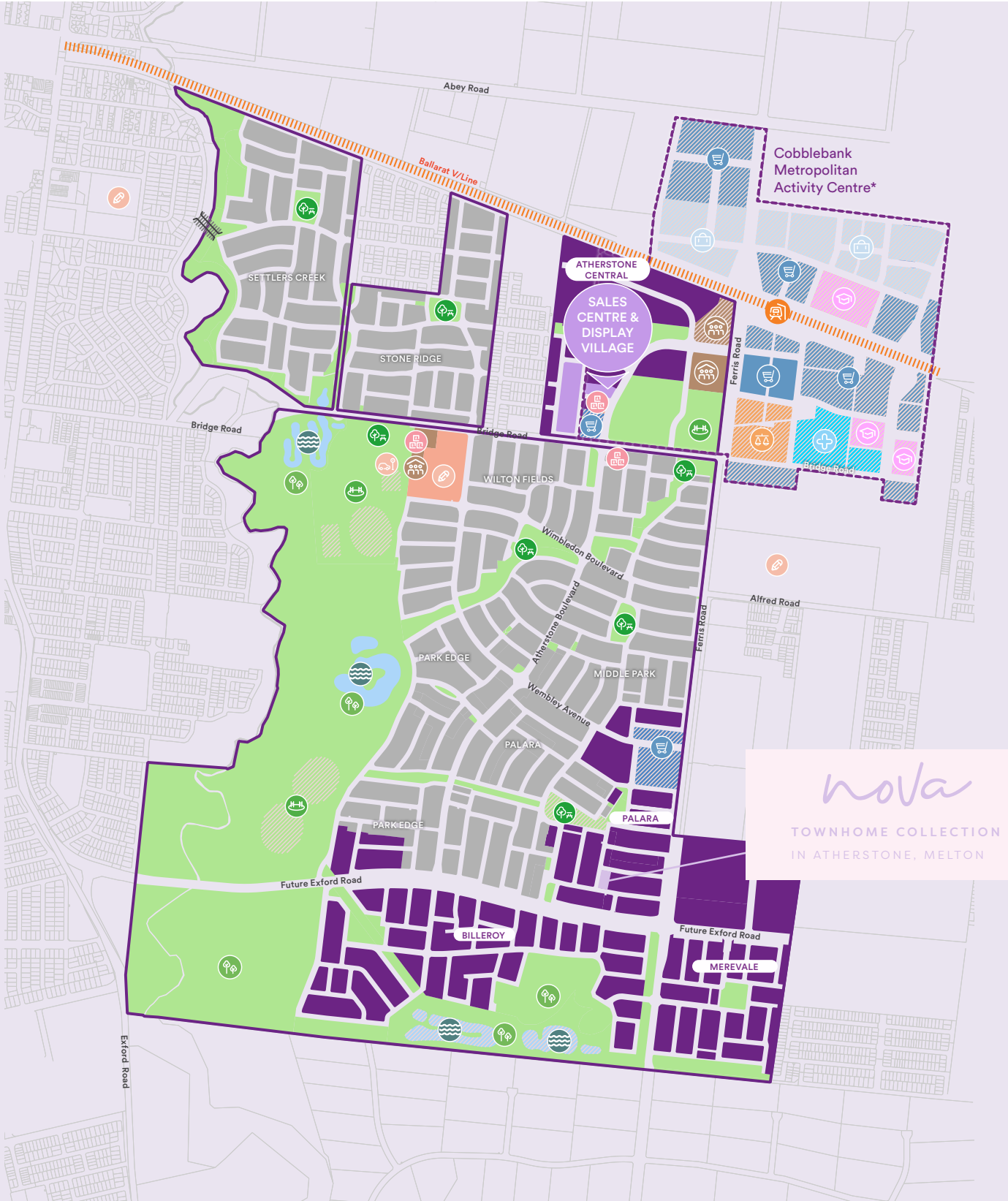
Feel instantly welcome in an established community, with sports and play facilities, schools and childcare centres, parklands and much more ready for you to enjoy.

# Atherstone masterplan

- Future Development
- Developed Lots
- ▨ Denotes Future
- Development by others
- Cobblebank MAC Development Area\*

- 🌳 Active Open Space
- 🌳 Conservation Reserve
- ⚽ Sporting Space
- 🌊 Wetlands
- 🏠 Child Care/Early Learning
- 🎒 Primary or Secondary School
- 🎓 Tertiary Education
- 🚗 Traffic Education School
- 🛒 Retail and Convenience
- 💼 Commercial and Office
- 🏥 Health Facilities
- 👨‍👩‍👦 Community and/or Civic Facilities
- 🚆 Cobblebank Train Station
- ⚖️ Justice Facilities

\*Proposed uses as outlined in the Urban Design Framework September 2019.  
This plan was produced by Lendlease Communities (Atherstone) Pty Limited 16 110 348 108 and is current as at March 2022. It has been produced from information available or forecast at the time of publication for guidance only and is not an offer or an inducement to enter into a contract or any other agreement. Some items in this brochure are subject to receipt of government approvals and actions of third parties, which are outside of Lendlease control. No warranty, express or implied, is given as to the accuracy of the information in this brochure, nor does Lendlease, Melton City Council or other parties involved in the Atherstone development accept any responsibility for any inaccuracies. All images in this plan are for illustrative purposes and are indicative only. All projections contained in this plan represent best estimates only as at April 2022. Prospective purchasers, investors and other interested parties should make their own independent enquiries as to the details of the development which may be subject to change without notice.





# SOHO

LIVING



This brochure is intended to provide general information only and does not constitute an offer to supply. All photographs, plans, maps and drawings are illustrative only and may not be to scale. Lot layout, lot size dimensions, easements, landscape treatments, final road layout, public utility and service infrastructure locations and zoning are subject to change and conditional on authority approval. Prospective buyers should make and rely on their own enquiries, refer to their contract for full terms and conditions, and obtain independent advice including legal and financial advice. SOHO Living CDB-U 50036.