



# MAGNUS

townhome collection



SOHO  
LIVING



# The SOHO Living DIFFERENCE

When you choose SOHO Living, you are investing in a space that instills both a physical and emotional connection to its design.

Our developments are a smart investment where the strength in each homeowner's individuality builds a diverse and welcoming community.

The fresh, sharp aesthetics inject style and dignity into your lifestyle. SOHO Living inspires its communities to value exploration, expression of self and collaboration.

Investing with SOHO Living is investing in an optimistic future. Our developments aim to create lasting, elegant neighbourhoods that have a style and modernism that is pioneering and versatile – being young and dynamic and thinking outside the box is what SOHO Living does best.



# MAGNUS

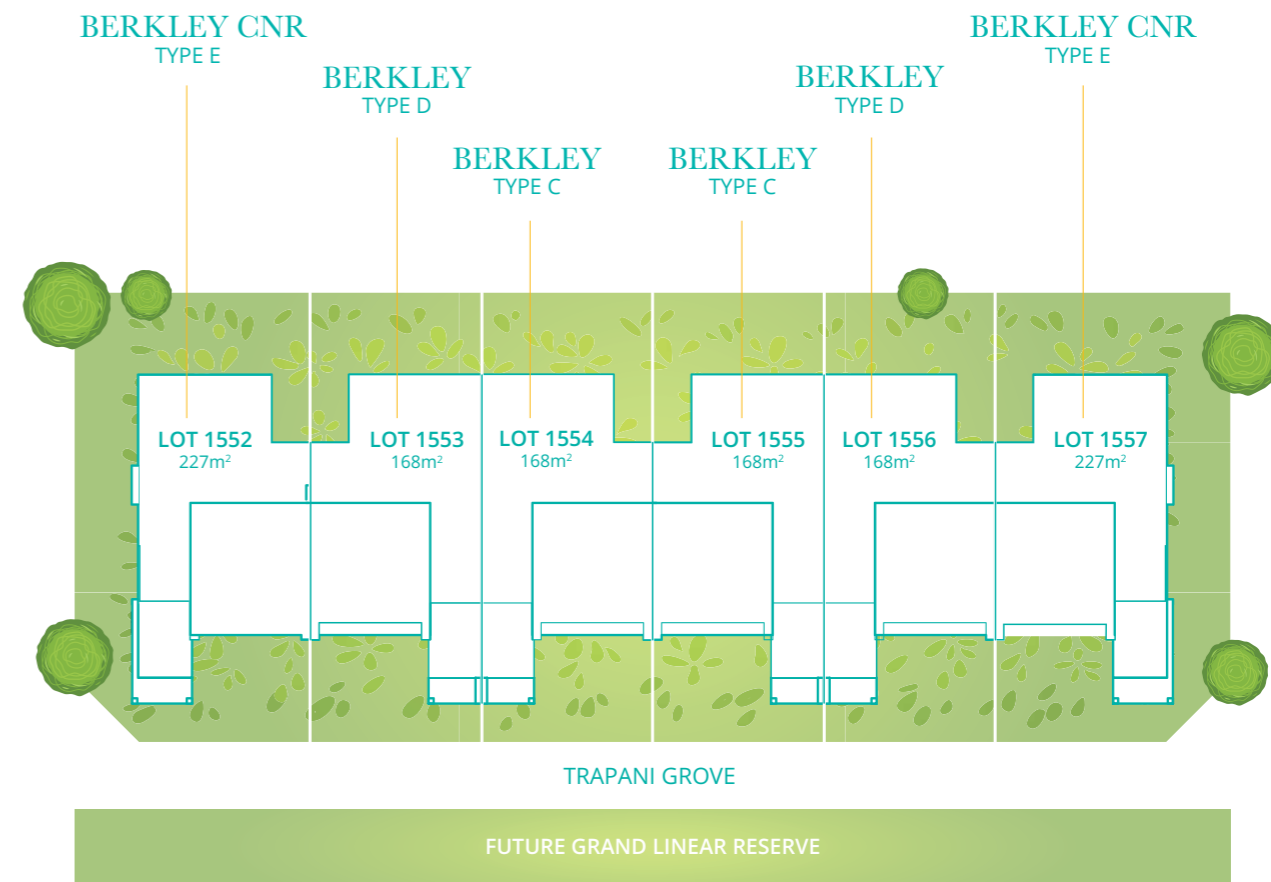
townhome collection

Happiness is living at Carolina.

Welcome home to Carolina an address that combines smart design, comfortable living, and the peace-of-mind in knowing exactly what you can enjoy from the day you move in.

Within moments of your front door, you could be strolling through the Grand Linear Park that seems to stretch forever or spending the day at Watergardens Shopping Centre or Caroline Springs Town Centre with their well-established specialty stores, grocers, markets, cafés and eateries, entertainment, cultural centres and more. Great schools and childcare are nearby, transport connections are smooth and convenient, and a warm community spirit weaves through every street.

Carolina is a place that's truly special, where lush green spaces will lift your spirits, and peaceful neighbourhoods soothe your soul. Relax, laugh, be yourself, and let the cares of the world just melt away.



NORTH

Artist Impression. Images, measurements and other information are for general illustration purposes only and not to scale. Lot size dimensions, easements, landscape treatments, final road layout, public utility and service infrastructure locations and zoning are subject to change and are conditional on authority approval. CDB-U 50036

# BERKLEY CNR

TYPE E | 20SQ



LOT  
1552\*  
1557

4 BEDROOM  
OPTION  
AVAILABLE

3 2.5 2

# BERKLEY

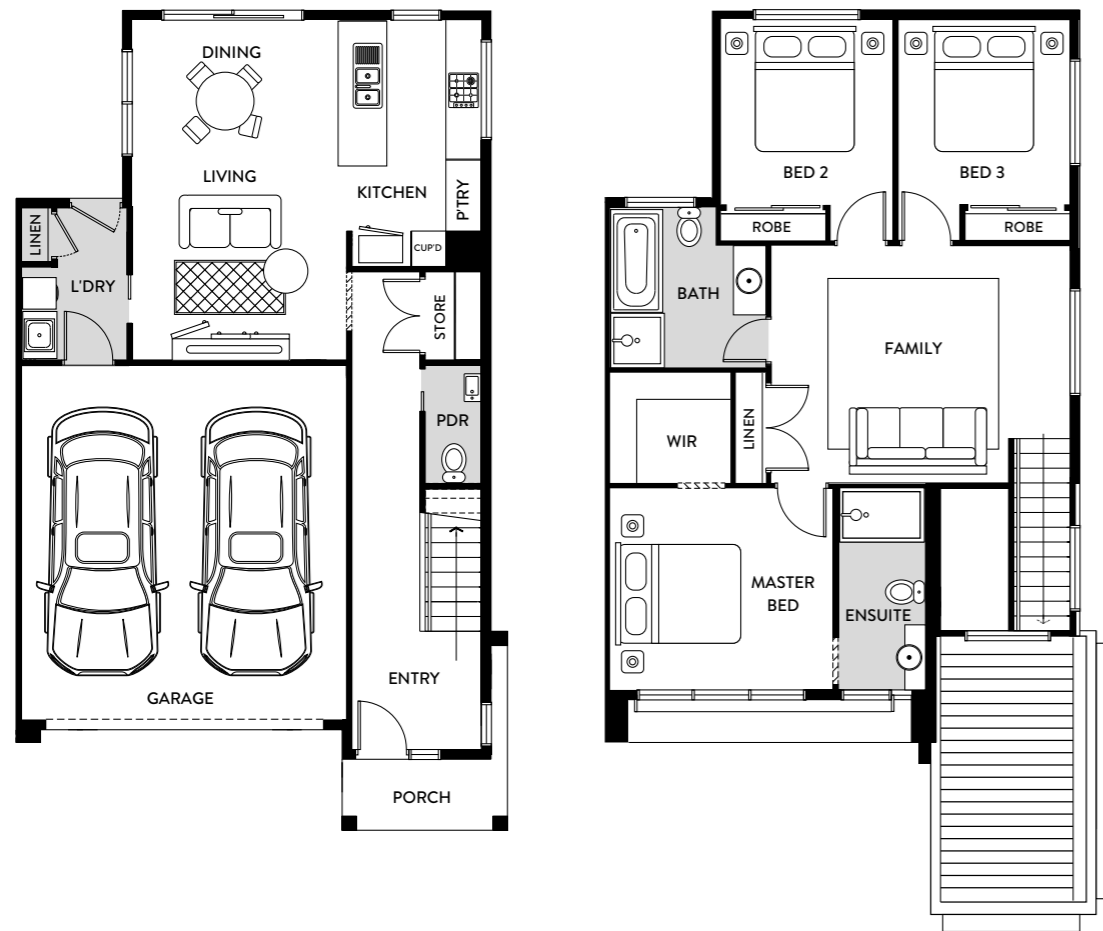
TYPE D | 19SQ



LOT  
1553  
1556\*

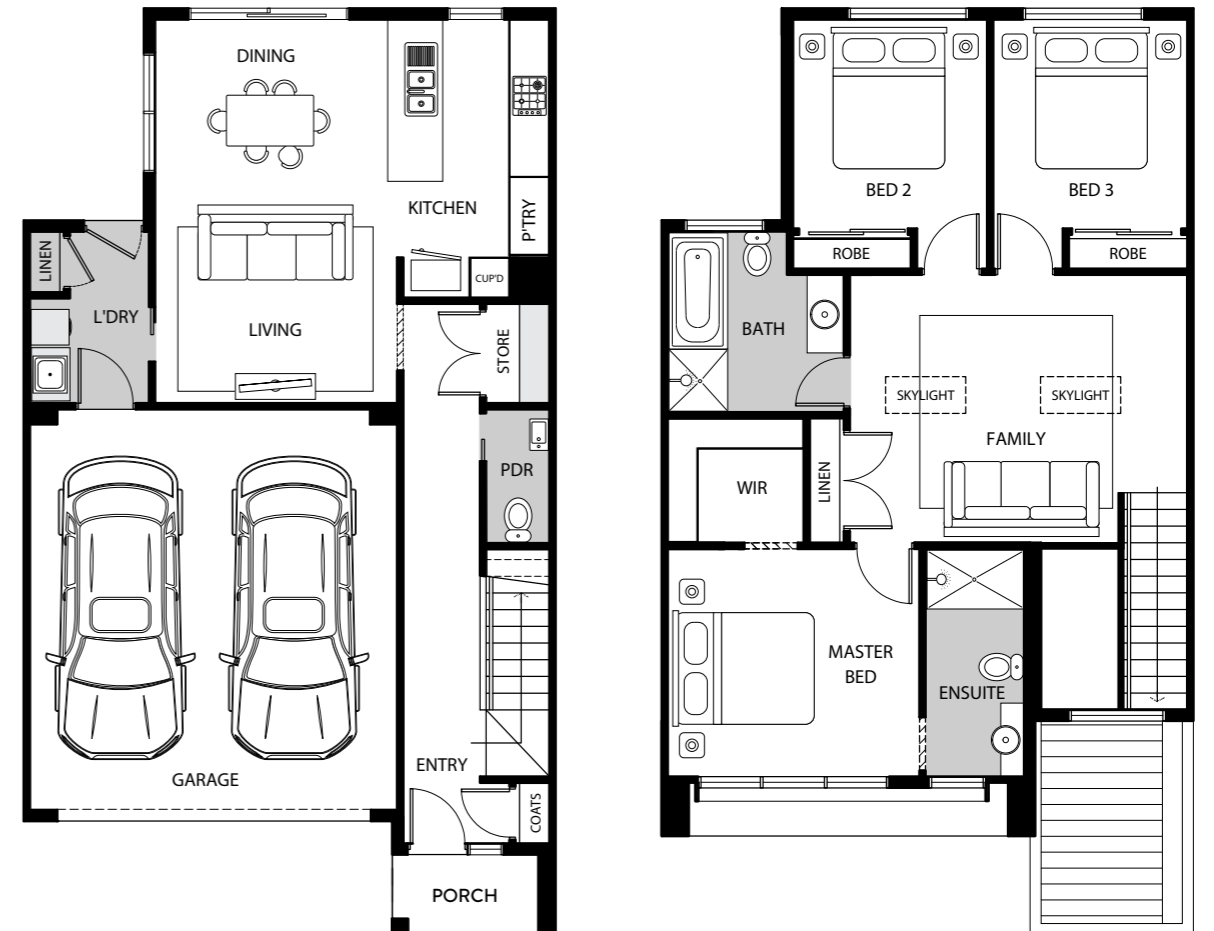
4 BEDROOM  
OPTION  
AVAILABLE

3 2.5 2



Ground Floor

First Floor



Ground Floor

First Floor

*These plans and information are indicative only and may vary without notice. Furniture or vehicles are not included in the sale of these lots. The images depicted here are indicative only. Facade finishes and colours may vary. 4 Bed configuration available. 1552 - Reversed*

*These plans and information are indicative only and may vary without notice. Furniture or vehicles are not included in the sale of these lots. The images depicted here are indicative only. Facade finishes and colours may vary. 4 Bed configuration available. 1556 - Reversed*

# BERKLEY

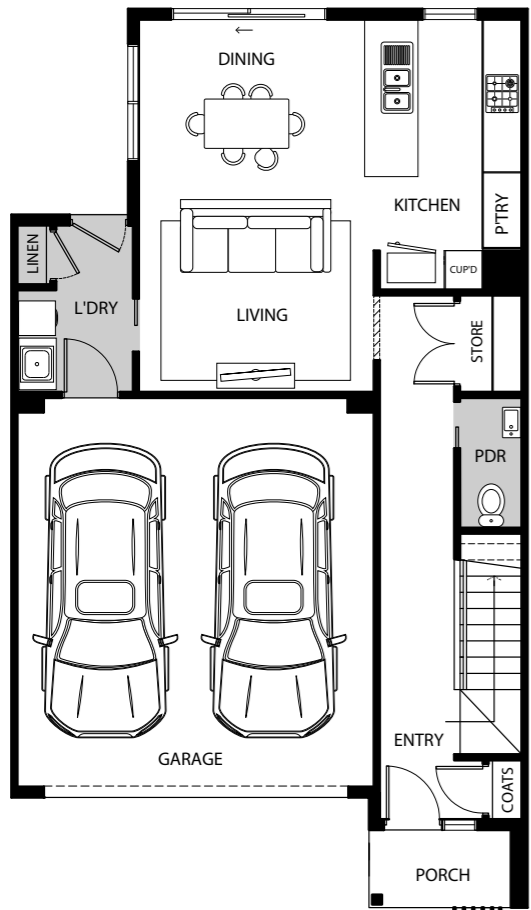
TYPE C | 195Q



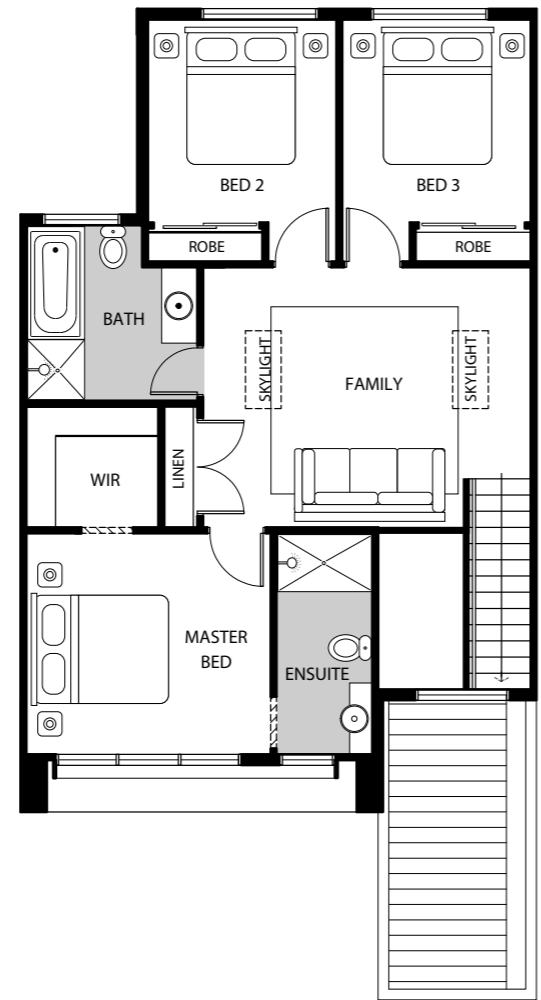
LOT  
1554\*  
1555

4 BEDROOM  
OPTION  
AVAILABLE

3 2.5 2



Ground Floor



First Floor

These plans and information are indicative only and may vary without notice. Furniture or vehicles are not included in the sale of these lots. The images depicted here are indicative only. Facade finishes and colours may vary. 4 Bed configuration available. 1554 - Reversed



# SOHO Living SMART TURNKEY INCLUSIONS

## INTERNAL FEATURES

**Ceiling Height:** 2590mm ceiling height (nominal) to single storey with 75mm cove cornice. 2590mm ceiling height (nominal) to ground floor of double storey homes, 2440mm ceiling height (nominal) to first floor, 75mm cove cornice throughout.

**Room Doors:** Flush panel Honeycomb Core 2040mm high to single storey, 2040mm high to ground floor and first floor of double storey.

**Room Door Furniture:** Passage set. Provide Alba Chrome levers through Chrome finish.

**Mouldings:** Skirtings – 67x18mm square edge primed MDF. Architraves – 67x18mm square edge primed MDF.

**Plaster:** Ceiling Plaster. 10mm plasterboard finish.

**Wall Plaster:** Plasterboard 10mm thick. Water resistant plasterboard to Ensuite, Bathroom and above Laundry trough.

## PAINT

**Internal and External:** Two coats.

**Woodwork and Skirting:** Two coats.

## HEATING

Panel heating unit installed to living areas and bedrooms (excludes wet areas and area's with split systems) as per manufacturers/suppliers recommendations for home size.

## HOT WATER SYSTEM

Hot water unit in accordance with estate design guidelines.

## KITCHEN

European inspired oven 600mm.

European inspired cooktop 600mm 4 burner stainless steel gas cooktop.

European inspired rangehood 600mm stainless steel.

European inspired dishwasher 600mm.

**Sink:** Stainless steel double bowl sink.

**Tap:** Mixer gooseneck in chrome finish.

**Bench Top:** Engineered stone benchtop 20mm. Choose colour from SOHO Living colour scheme.

**Splashback:** Selected as per SOHO Living colour scheme. Regent design white subway tiles.

## BATHROOM, ENSUITE, POWDER ROOM & WC

**Mirror:** Polished edges to full width of vanities sitting on 200mm tile splashback.

**Basin:** Ceramic abovement 440mm round, 120mm high, No tap hole low profile square inset basin (white), chrome waste 1 tap hole/overflow.

**Vanity Unit:** Floating vanity unit on tiled pedestal.

**Bench Top:** Engineered stone benchtop 20mm. Choose colour from SOHO Living colour scheme.

**Bath:** 1525/1675mm acrylic bath (white) in tiled podium. (Design Specific)

**Shower Bases:** Ceramic tiled shower base. Selection from SOHO Living colour scheme range with Stainless Steel Centre Waste.

**Shower Screens:** 1950mm high semi frameless with pivot door and clear laminated glass.

**Taps and Outlets:** Ensuite Shower hand shower on rail.

Bathroom Shower – Shower hand shower on rail.

Bath (Wall Mounted) – Straight wall bath outlet and wall mixer.

Basin (Wall Mounted) – Wall mixer.

**Accessories:** Toilet roll holders chrome and double towel rails.

**Toilet Suite:** China toilet suite in white with soft close seat.

## LAUNDRY

**Trough:** Design specific.

**Base Cupboard:** 800mm wide fully lined modular cabinet, refer to working drawings.

**Bench Top:** Laminate with square edge.

**Tapware:** Sink mixer in chrome finish.

## ELECTRICAL

**Internal Light Points:** Recessed LED downlight in white non-metallic polyamide housing with diffuser.

**External Light Points:** (2 No) flood light wall mounted light fitting.

**Power Points:** White surround, double power points throughout excluding dishwasher, microwave and refrigerator provision, where a single power point is provided.

**Smoke Detector:** Hardwired with battery backup.

**Exhaust Fans:** Above all showers not opening to outside air, 250mm with self-sealing air flow draft stoppers.

**TV Points:** To Family and Master Bedroom.

**Telephone Point:** To Kitchen and Master Bedroom.

**Safety Switch:** Residual Current Devices safety switch and circuit breakers to meter box.

## PLUMBING

(2 No) garden taps, one located to the front water meter and one adjacent the external Laundry door.

## TILING

**Ceramic Floor Tiles:** Selected from SOHO Living colour scheme 400x400mm to Laundry, Ensuite, Bathroom, WC, Internal Courtyard and Powder room.

**Ceramic Wall Tiles:** Selected from SOHO Living colour scheme 400x400mm to Laundry, Ensuite, Bathroom, WC, Powder room, shower recesses and above bath.

## FLOOR COVERINGS

**Carpet:** Selected from SOHO Living colour scheme to Bedrooms, WIR, Activity and Staircase.

**Timber Laminate:** Selected from SOHO Living colour scheme timber look laminate flooring to Entry, Kitchen, WIP, Meals, Family, Living, Rear Hallway, Lounge and Study.

## STORAGE

**Shelving:** Robes – One white melamine shelf and hanging rail.

Walk in Robe – One white melamine shelf and hanging rail.

Pantry/Linen – Four white melamine shelves.

Broom – One white melamine shelf (Design specific).

## STAIRS (DOUBLE STOREY HOMES)

Plaster dwarf walls to stairs and void areas with painted timber handrail (refer to staircase layout).

## CAR ACCOMODATION

**Garage Door:** 2100mm high x 4800mm wide Colorbond sectional door in flat line profile.

**Remote Control:** Remote control unit to front garage door with 2 handsets.

## OUTDOOR

**Landscaping:** Garden and plants to the front and rear. Instant turf to rear yard. Or as per landscape design on drawings.

**Fencing:** 1800mm high timber paling/Colorbond including wing fence and gate to suit estate design covenants.

**Paving:** Coloured concrete to driveway and front path.

**Letterbox:** Pre cast concrete letterbox with colour to match house.

**Clothesline:** Fold out clothesline in rear yard.

## ABOUT US

Member of Master Builders Association & Housing Industry of Australia.

10-year structural guarantee.

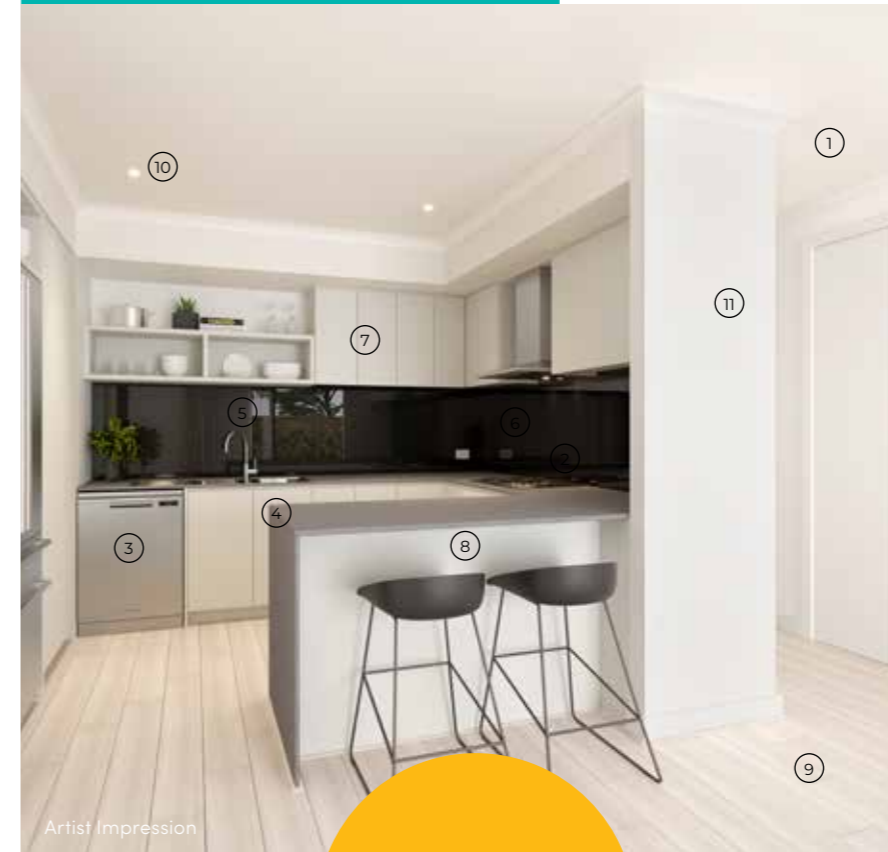
SOHO Living reserves the right to amend specification without prior notice. Products may vary depending on availability. Imagery for illustrative purposes.



All images are for illustrative purposes only.

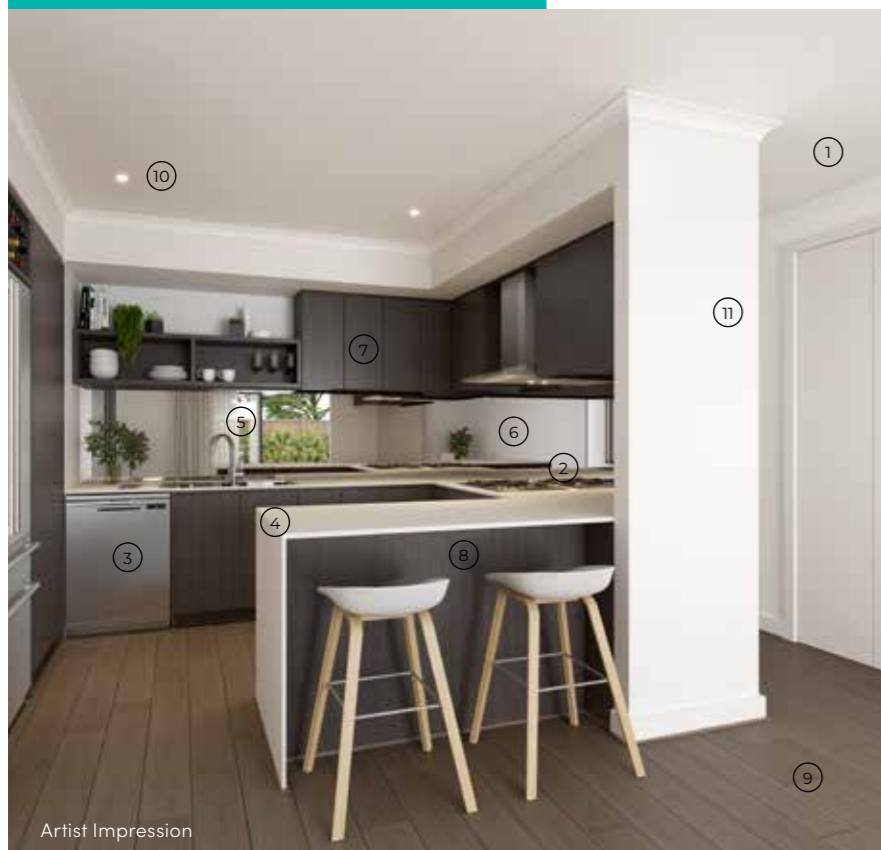
# SOHO Living COLOUR SCHEMES

## COLOUR SCHEME 2



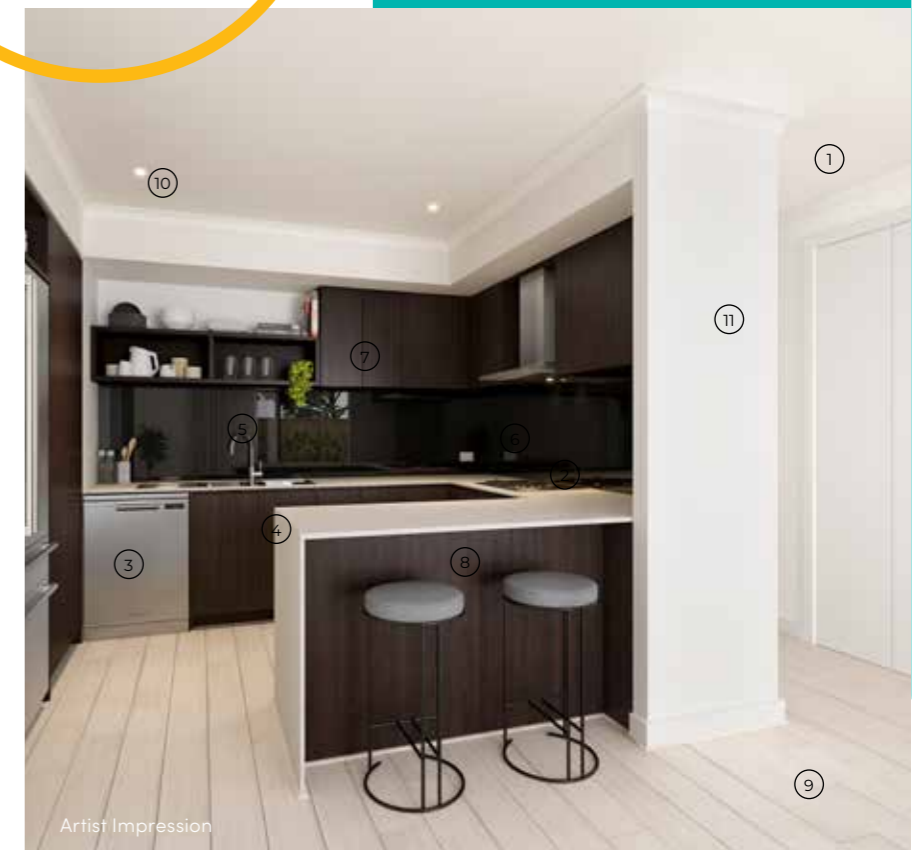
- ① 2590mm Ceilings to ground floor
- ② Fisher & Paykel 600mm Rangehood & cooktop, 600mm Fisher & Paykel Oven
- ③ Fisher & Paykel Dishwasher
- ④ 20mm Caesarstone benchtop with waterfall edge (Nickel)
- ⑤ 200mm Gooseneck tap & 1.75L sink insert
- ⑥ Premium Splashback (Grey mirror)
- ⑦ Overhead laminex cupboards (Oyster Grey)
- ⑧ Laminex cabinetry (Oyster Grey)
- ⑨ Quality Timber Laminate Flooring (Buckwheat)
- ⑩ LED Downlights
- ⑪ Wattyl Paint

## COLOUR SCHEME 1



- ① 2590mm Ceilings to ground floor
- ② Fisher & Paykel 600mm Rangehood & cooktop, 600mm Fisher & Paykel Oven
- ③ Fisher & Paykel Dishwasher
- ④ 20mm Caesarstone benchtop with waterfall edge (Osprey)
- ⑤ 200mm Gooseneck tap & 1.75L sink insert
- ⑥ Premium Splashback (Silver mirror)
- ⑦ Overhead laminex cupboards (Nocturne Oak)
- ⑧ Laminex cabinetry (Nocturne Oak)
- ⑨ Quality Timber Laminate Flooring (Rye)
- ⑩ LED Downlights
- ⑪ Wattyl Paint

## COLOUR SCHEME 3



- ① 2590mm Ceilings to ground floor
- ② Fisher & Paykel 600mm Rangehood & cooktop, 600mm Fisher & Paykel Oven
- ③ Fisher & Paykel Dishwasher
- ④ 20mm Caesarstone benchtop with waterfall edge (Osprey)
- ⑤ 200mm Gooseneck tap & 1.75L sink insert
- ⑥ Premium Splashback (Grey mirror)
- ⑦ Overhead laminex cupboards (Nocturne Oak)
- ⑧ Laminex cabinetry (Nocturne Oak)
- ⑨ Quality Timber Laminate Flooring (Rustic Buckwheat)
- ⑩ LED Downlights
- ⑪ Wattyl Paint

## COLOUR SCHEME 4



- ① 2590mm Ceilings to ground floor
- ② Fisher & Paykel 600mm Rangehood & cooktop, 600mm Fisher & Paykel Oven
- ③ Fisher & Paykel Dishwasher
- ④ 20mm Caesarstone benchtop with waterfall edge (Oyster)
- ⑤ 200mm Gooseneck tap & 1.75L sink insert
- ⑥ Premium Splashback (White Penny round)
- ⑦ Overhead laminex cupboards (Rural Oak)
- ⑧ Laminex cabinetry (Storm Cloud-140)
- ⑨ Quality Timber Laminate Flooring (Rustic Maize)
- ⑩ LED Downlights
- ⑪ Watty! Paint

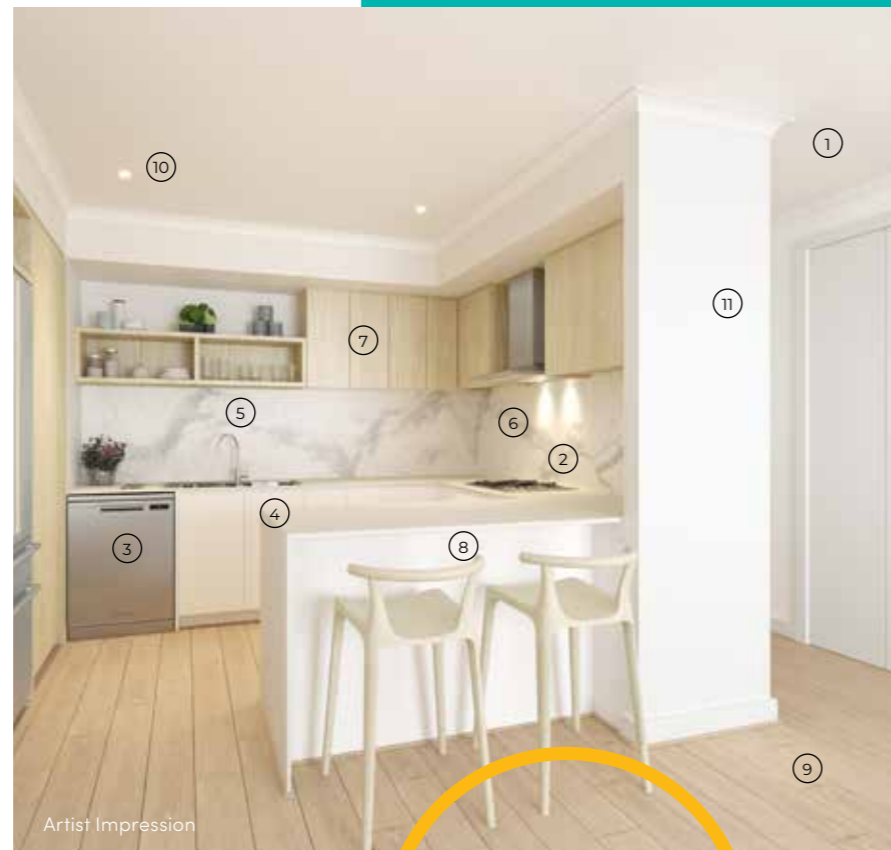
## COLOUR SCHEME 6



- ① 2590mm Ceilings to ground floor
- ② Fisher & Paykel 600mm Rangehood & cooktop, 600mm Fisher & Paykel Oven
- ③ Fisher & Paykel Dishwasher
- ④ 20mm Caesarstone benchtop with waterfall edge (Nickel)
- ⑤ 200mm Gooseneck tap & 1.75L sink insert
- ⑥ Premium Splashback (Calacatta Gold Tile)
- ⑦ Overhead laminex cupboards (Calm White)
- ⑧ Laminex cabinetry (Calm White)
- ⑨ Quality Timber Laminate Flooring (Rye Matt)
- ⑩ LED Downlights
- ⑪ Watty! Paint

## COLOUR SCHEME 5

- ① 2590mm Ceilings to ground floor
- ② Fisher & Paykel 600mm Rangehood & cooktop, 600mm Fisher & Paykel Oven
- ③ Fisher & Paykel Dishwasher
- ④ 20mm Caesarstone benchtop with waterfall edge (Snow)
- ⑤ 200mm Gooseneck tap & 1.75L sink insert
- ⑥ Premium Splashback
- ⑦ Overhead laminex cupboards (Bleached Elm)
- ⑧ Laminex cabinetry (Calm White)
- ⑨ Quality Timber Laminate Flooring (Rustic Oatmeal)
- ⑩ LED Downlights
- ⑪ Watty! Paint



All images are for illustrative purposes only.



MAGNUS  
townhome collection

# Meet THE DEVELOPER

## We bring people together.

No matter where we come from or where we are going, we all want the same thing - we want to belong.

It's in our DNA. It's part of what it is to be human.

At AVID Property Group, we create neighbourhoods that bring people together and we turn these neighbourhoods into thriving, connected communities.

We're fuelled by our passion for creating places and homes that set new benchmarks and enables our residents to enjoy a better life.

At AVID, we bring people together. It is our philosophy. It is who we are. It is at the very core of our culture and it is a fundamental for our customers - now and in the future.

We bring  
people  
together.

**AVID**  
Property Group



SOHO  
LIVING

carolina  
by AVID Property Group

The information contained in this promotional material including statements, figures, images, and representations are indicative only, are current on the date of publication, and may change without notice. Images may include artist impressions and computer-generated images that are for general illustration purposes only, which may not be to scale and may differ from the final built form. Actual lots, stages, facilities, amenities, infrastructure, and their configuration are subject to statutory approval and may change. All persons should seek their own independent legal, financial, and real estate advice. This document is not a contract and is not binding. Please ask your new homes consultant for detailed home designs specific drawings for full extent of inclusions, features, pricing and specifications of your preferred SOHO Living home design, colour scheme and or facade. All information contained within this brochure is accurate at time of February 2023.