

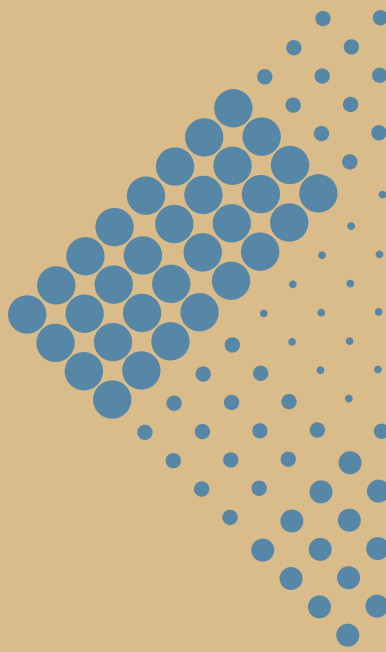


# wilton

- Townhomes Collection -



A QUALITY **SOHO** PROJECT  
LIVING



# The SOHO Living *difference*

When you choose SOHO Living, you are investing in a space that instills both a physical and emotional connection to its design.

Our developments are a smart investment where the strength in each homeowner's individuality builds a diverse and welcoming community.

The fresh, sharp aesthetics inject style and dignity into your lifestyle. SOHO Living inspires its communities to value exploration, expression of self and collaboration.

Investing with SOHO Living is investing in an optimistic future. Our developments aim to create lasting, elegant neighbourhoods that have a style and modernism that is pioneering and versatile – being young and dynamic and thinking outside the box is what SOHO Living does best.





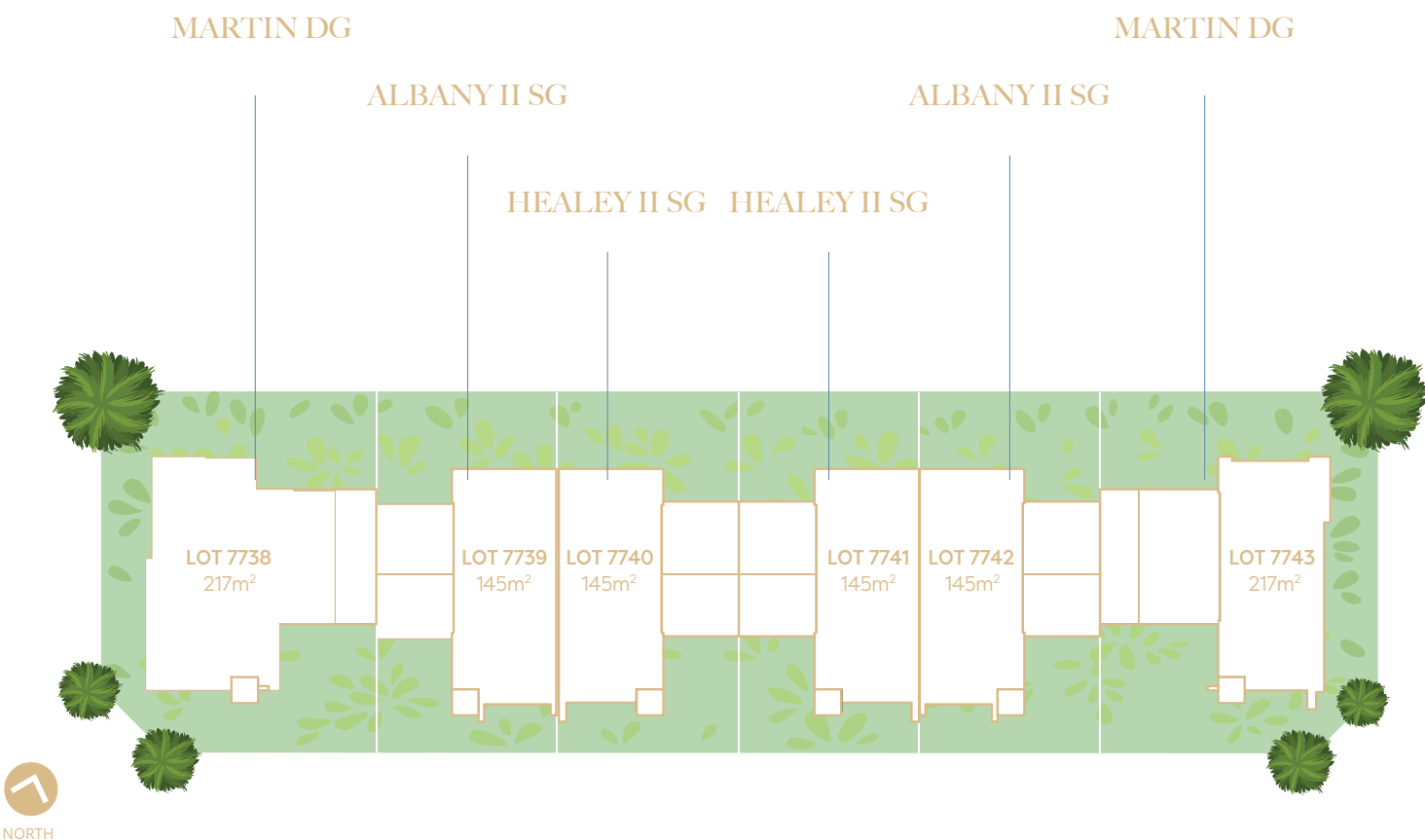
Artist Impression

# wilton

- Townhomes Collection -

## The heart of Harpley.

Surrounded by sparkling waterways, Harpley Town Centre is set to be a destination like no other. Perfectly positioned at the heart of this vibrant neighbourhood, this is a place for the community to come together, and where everything you need is readily available.



Artist Impression. Images, measurements and other information are for general illustration purposes only and not to scale. Lot size dimensions, easements, landscape treatments, final road layout, public utility and service infrastructure locations and zoning are subject to change and are conditional on authority approval. CDB-U 50036

# MARTIN DG

18SQ



LOT  
7738  
7743\*

4 2.5 2

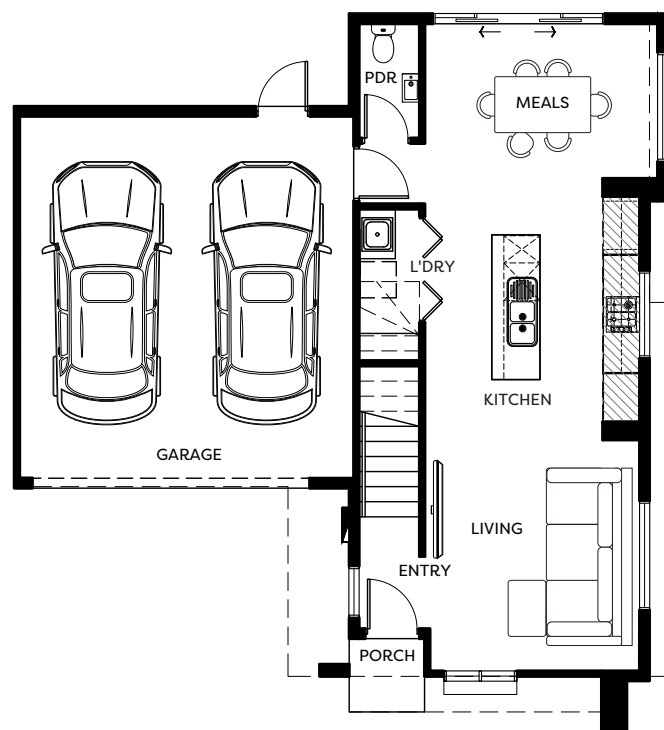
# ALBANY II SG

16SQ

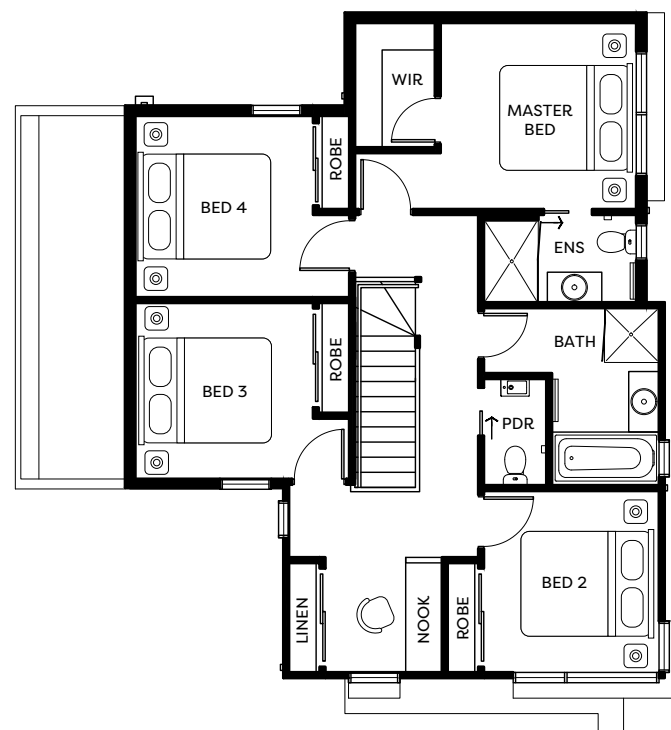


LOT  
7739  
7742\*

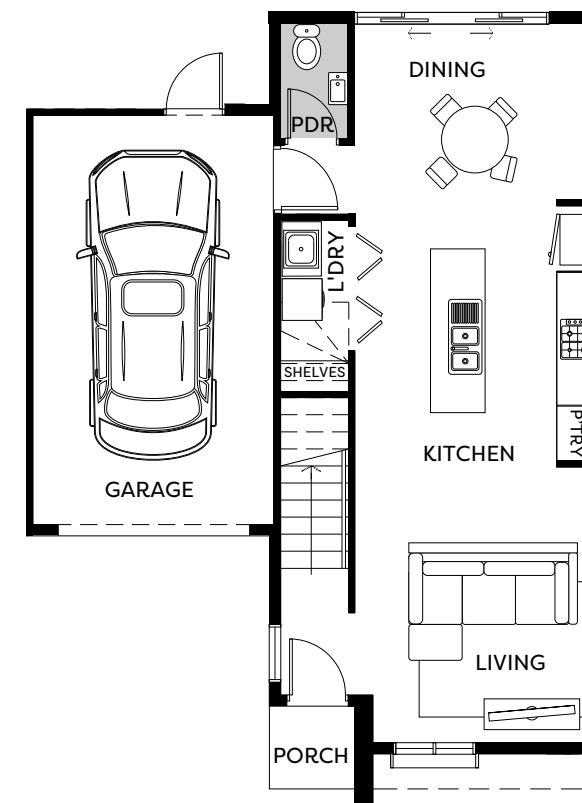
3 2.5 1



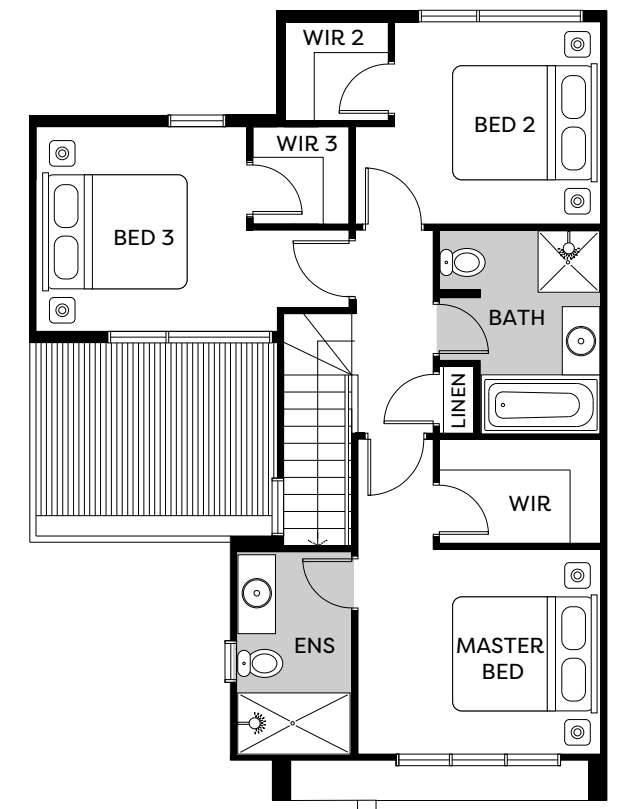
Ground Floor



First Floor



Ground Floor



First Floor

These plans and information are indicative only and may vary without notice. Furniture or vehicles are not included in the sale of these lots.  
The images depicted here are indicative only. Facade finishes and colours may vary. 7743 - Reversed.

These plans and information are indicative only and may vary without notice. Furniture or vehicles are not included in the sale of these lots.  
The images depicted here are indicative only. Facade finishes and colours may vary. 7742 - Reversed.



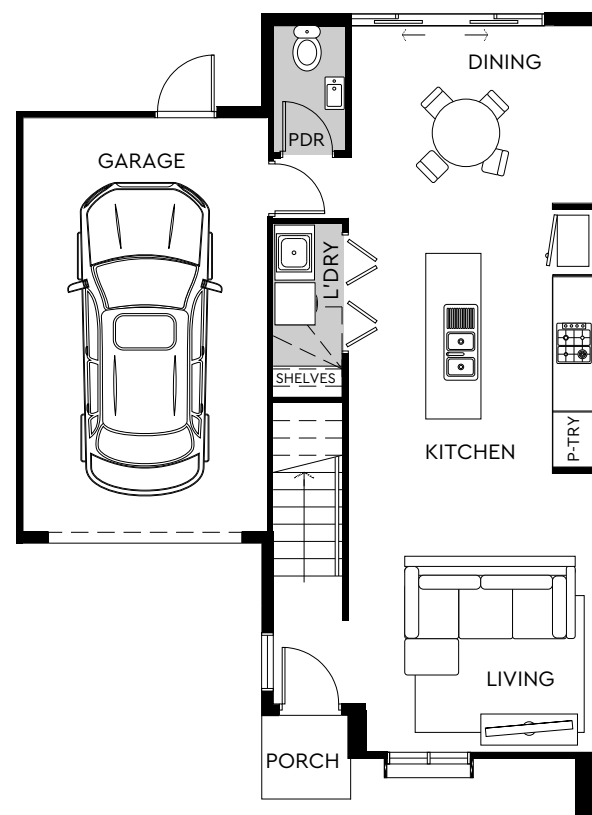
# HEALEY II SG

16SQ

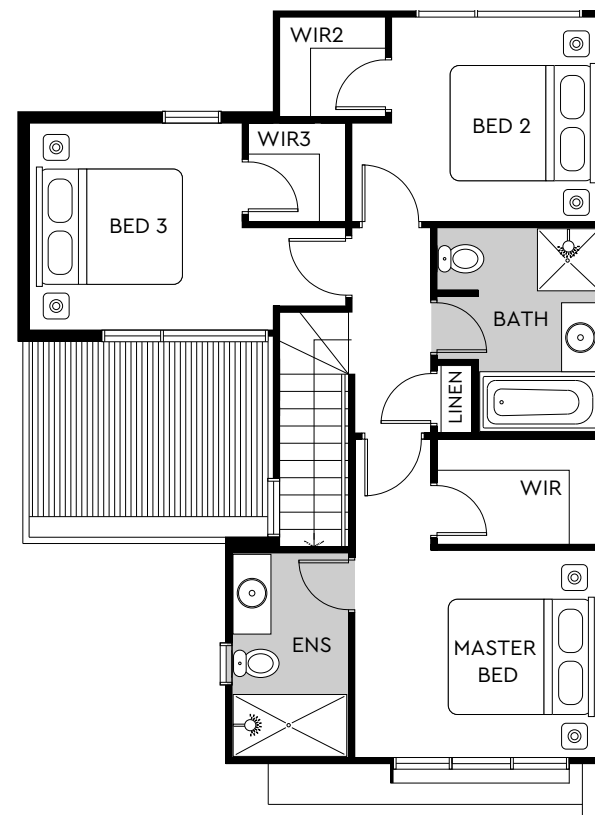


LOT  
7740  
7741\*

3 2.5 1



Ground Floor



First Floor

These plans and information are indicative only and may vary without notice. Furniture or vehicles are not included in the sale of these lots.  
The images depicted here are indicative only. Facade finishes and colours may vary. 7741 - Reversed.





# SOHO Living

## SMART TURNKEY INCLUSIONS

### INTERNAL FEATURES

**Ceiling Height:** 2590mm ceiling height (nominal) to single storey with 75mm cove cornice. 2590mm ceiling height (nominal) to ground floor of double storey homes, 2440mm ceiling height (nominal) to first floor, 75mm cove cornice throughout.

**Room Doors:** Flush panel Honeycomb Core 2040mm high to single storey, 2040mm high to ground floor and first floor of double storey.

**Room Door Furniture:** Passage set. Provide Alba Chrome levers through Chrome finish.

**Mouldings:** Skirtings – 67x18mm square edge primed MDF. Architraves – 67x18mm square edge primed MDF.

**Plaster:** Ceiling Plaster. 10mm plasterboard finish.

**Wall Plaster:** Plasterboard 10mm thick. Water resistant plasterboard to Ensuite, Bathroom and above Laundry trough.

### PAINT

**Internal and External:** Two coats.

**Woodwork and Skirting:** Two coats.

### HEATING

Panel heating unit installed to living areas and bedrooms (excludes wet areas and area's with split systems) as per manufacturers/suppliers recommendations for home size.

### HOT WATER SYSTEM

Hot water unit in accordance with estate design guidelines.

### KITCHEN

European inspired oven 600mm.

European inspired cooktop 600mm 4 burner stainless steel gas cooktop.

European inspired rangehood 600mm stainless steel.

European inspired dishwasher 600mm.

**Sink:** Stainless steel double bowl sink.

**Tap:** Mixer gooseneck in chrome finish.

**Bench Top:** Engineered stone benchtop 20mm. Choose colour from SOHO Living colour scheme.

**Splashback:** Selected as per SOHO Living colour scheme. Regent design white subway tiles.

### BATHROOM, ENSUITE, POWDER ROOM & WC

**Mirror:** Polished edges to full width of vanities sitting on 200mm tile splashback.

**Basin:** Ceramic abovement 440mm round, 120mm high, No tap hole low profile square inset basin (white), chrome waste 1 tap hole/overflow.

**Vanity Unit:** Floating vanity unit on tiled pedestal.

**Bench Top:** Engineered stone benchtop 20mm. Choose colour from SOHO Living colour scheme.

**Bath:** 1525/1675mm acrylic bath (white) in tiled podium. (Design Specific)

**Shower Bases:** Ceramic tiled shower base. Selection from SOHO Living colour scheme range with Stainless Steel Centre Waste.

**Shower Screens:** 1950mm high semi frameless with pivot door and clear laminated glass.

**Taps and Outlets:** Ensuite Shower hand shower on rail.

Bathroom Shower – Shower hand shower on rail.

Bath (Wall Mounted) – Straight wall bath outlet and wall mixer.

Basin (Wall Mounted) – Wall mixer.

**Accessories:** Toilet roll holders chrome and double towel rails.

**Toilet Suite:** China toilet suite in white with soft close seat.

### LAUNDRY

**Trough:** Design specific.

**Base Cupboard:** 800mm wide fully lined modular cabinet, refer to working drawings.

**Bench Top:** Laminate with square edge.

Tapware: Sink mixer in chrome finish.

### ELECTRICAL

**Internal Light Points:** Recessed LED downlight in white non-metallic polyamide housing with diffuser.

**External Light Points:** (2 No) flood light wall mounted light fitting.

**Power Points:** White surround, double power points throughout excluding dishwasher, microwave and refrigerator provision, where a single power point is provided.

**Smoke Detector:** Hardwired with battery backup.

**Exhaust Fans:** Above all showers not opening to outside air, 250mm with self-sealing air flow draft stoppers.

**TV Points:** To Family and Master Bedroom.

**Telephone Point:** To Kitchen and Master Bedroom.

**Safety Switch:** Residual Current Devices safety switch and circuit breakers to meter box.

### PLUMBING

(2 No) garden taps, one located to the front water meter and one adjacent the external Laundry door.

### TILING

**Ceramic Floor Tiles:** Selected from SOHO Living colour scheme 400x400mm to Laundry, Ensuite, Bathroom, WC, Internal Courtyard and Powder room.

**Ceramic Wall Tiles:** Selected from SOHO Living colour scheme 400x400mm to Laundry, Ensuite, Bathroom, WC, Powder room, shower recesses and above bath.

### FLOOR COVERINGS

**Carpet:** Selected from SOHO Living colour scheme to Bedrooms, WIR, Activity and Staircase.

**Timber Laminate:** Selected from SOHO Living colour scheme timber look laminate flooring to Entry, Kitchen, WIP, Meals, Family, Living, Rear Hallway, Lounge and Study.

### STORAGE

**Shelving:** Robes – One white melamine shelf and hanging rail.

Walk in Robe – One white melamine shelf and hanging rail.

Pantry/Linen – Four white melamine shelves.

Broom – One white melamine shelf (Design specific).

### STAIRS (DOUBLE STOREY HOMES)

Plaster dwarf walls to stairs and void areas with painted timber handrail (refer to staircase layout).

### CAR ACCOMODATION

**Garage Door:** 2100mm high x 4800mm wide Colorbond sectional door in flat line profile.

**Remote Control:** Remote control unit to front garage door with 2 handsets.

### OUTDOOR

**Landscaping:** Garden and plants to the front and rear. Instant turf to rear yard. Or as per landscape design on drawings.

**Fencing:** 1800mm high timber paling/Colorbond including wing fence and gate to suit estate design covenants.

**Paving:** Coloured concrete to driveway and front path.

**Letterbox:** Pre cast concrete letterbox with colour to match house.

**Clothesline:** Fold out clothesline in rear yard.

### ABOUT US

Member of Master Builders Association & Housing Industry of Australia.

10-year structural guarantee.

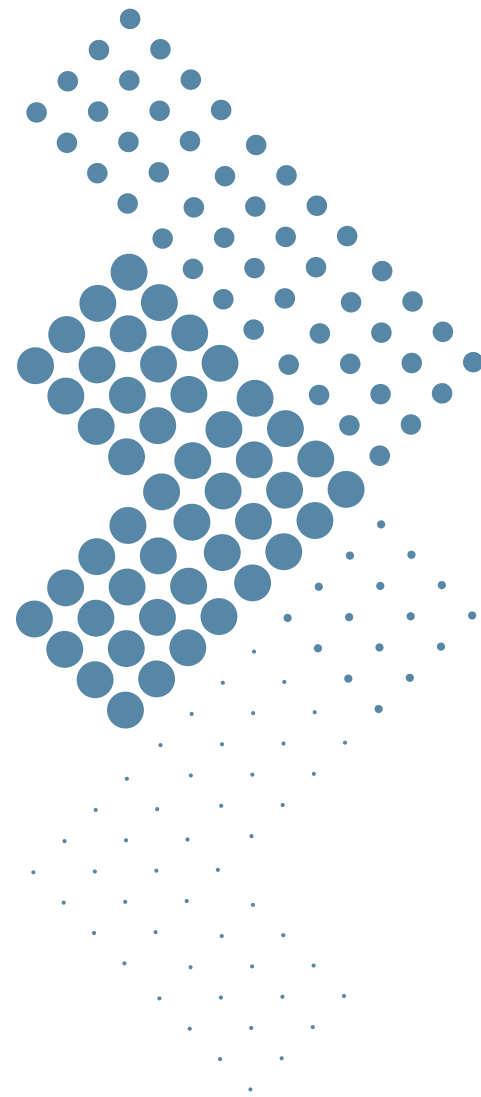
SOHO Living reserves the right to amend specification without prior notice. Products may vary depending on availability. Imagery for illustrative purposes.



All images are for illustrative purposes only.



# SOHO Living COLOUR SCHEMES

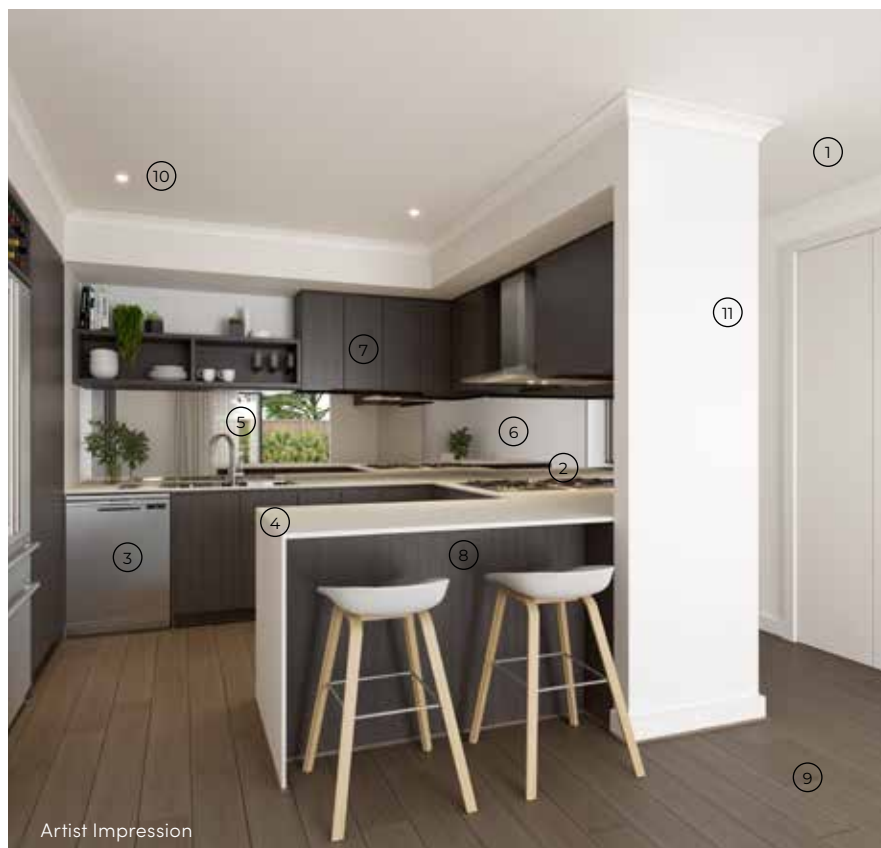


## Colour Scheme 2



- ① 2590mm Ceilings to ground floor
- ② Fisher & Paykel 600mm Rangehood & cooktop, 600mm Fisher & Paykel Oven
- ③ Fisher & Paykel Dishwasher
- ④ 20mm Caesarstone benchtop with waterfall edge (Nickel)
- ⑤ 200mm Gooseneck tap & 1.75L sink insert
- ⑥ Premium Splashback (Grey mirror)
- ⑦ Overhead laminex cupboards (Oyster Grey)
- ⑧ Laminex cabinetry (Oyster Grey)
- ⑨ Quality Timber Laminate Flooring (Buckwheat)
- ⑩ LED Downlights
- ⑪ Watty! Paint

## Colour Scheme 1



- ① 2590mm Ceilings to ground floor
- ② Fisher & Paykel 600mm Rangehood & cooktop, 600mm Fisher & Paykel Oven
- ③ Fisher & Paykel Dishwasher
- ④ 20mm Caesarstone benchtop with waterfall edge (Osprey)
- ⑤ 200mm Gooseneck tap & 1.75L sink insert
- ⑥ Premium Splashback (Silver mirror)
- ⑦ Overhead laminex cupboards (Nocturne Oak)
- ⑧ Laminex cabinetry (Nocturne Oak)
- ⑨ Quality Timber Laminate Flooring (Rye)
- ⑩ LED Downlights
- ⑪ Watty! Paint

## Colour Scheme 3



- ① 2590mm Ceilings to ground floor
- ② Fisher & Paykel 600mm Rangehood & cooktop, 600mm Fisher & Paykel Oven
- ③ Fisher & Paykel Dishwasher
- ④ 20mm Caesarstone benchtop with waterfall edge (Osprey)
- ⑤ 200mm Gooseneck tap & 1.75L sink insert
- ⑥ Premium Splashback (Grey mirror)
- ⑦ Overhead laminex cupboards (Nocturne Oak)
- ⑧ Laminex cabinetry (Nocturne Oak)
- ⑨ Quality Timber Laminate Flooring (Rustic Buckwheat)
- ⑩ LED Downlights
- ⑪ Watty! Paint



Colour Scheme 4



- ① 2590mm Ceilings to ground floor
- ② Fisher & Paykel 600mm Rangehood & cooktop, 600mm Fisher & Paykel Oven
- ③ Fisher & Paykel Dishwasher
- ④ 20mm Caesarstone benchtop with waterfall edge (Oyster)
- ⑤ 200mm Gooseneck tap & 1.75L sink insert
- ⑥ Premium Splashback (White Penny round)
- ⑦ Overhead laminex cupboards (Rural Oak)
- ⑧ Laminex cabinetry (Storm Cloud-140)
- ⑨ Quality Timber Laminate Flooring (Rustic Maize)
- ⑩ LED Downlights
- ⑪ Watty! Paint

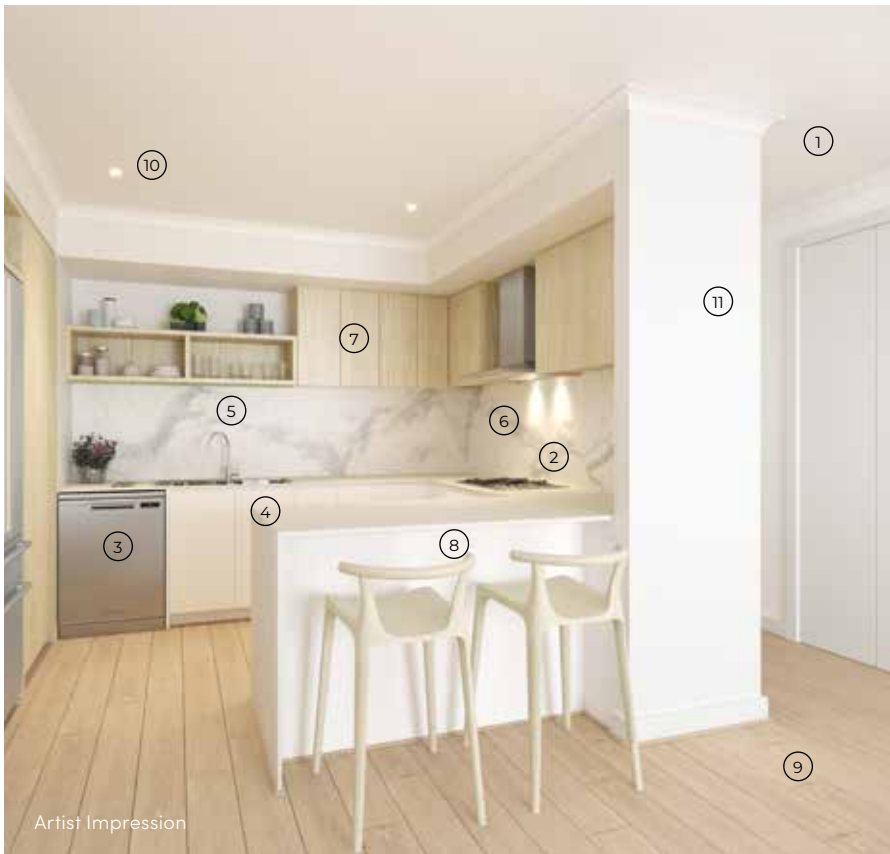
Colour Scheme 6



- ① 2590mm Ceilings to ground floor
- ② Fisher & Paykel 600mm Rangehood & cooktop, 600mm Fisher & Paykel Oven
- ③ Fisher & Paykel Dishwasher
- ④ 20mm Caesarstone benchtop with waterfall edge (Nickel)
- ⑤ 200mm Gooseneck tap & 1.75L sink insert
- ⑥ Premium Splashback (Calacatta Gold Tile)
- ⑦ Overhead laminex cupboards (Calm White)
- ⑧ Laminex cabinetry (Calm White)
- ⑨ Quality Timber Laminate Flooring (Rye Matt)
- ⑩ LED Downlights
- ⑪ Watty! Paint

Colour Scheme 5

- ① 2590mm Ceilings to ground floor
- ② Fisher & Paykel 600mm Rangehood & cooktop, 600mm Fisher & Paykel Oven
- ③ Fisher & Paykel Dishwasher
- ④ 20mm Caesarstone benchtop with waterfall edge (Snow)
- ⑤ 200mm Gooseneck tap & 1.75L sink insert
- ⑥ Premium Splashback
- ⑦ Overhead laminex cupboards (Bleached Elm)
- ⑧ Laminex cabinetry (Calm White)
- ⑨ Quality Timber Laminate Flooring (Rustic Oatmeal)
- ⑩ LED Downlights
- ⑪ Watty! Paint



All images are for illustrative purposes only.





## Welcome to the neighbourhood

- Future Harpley Lots
- Sold Harpley Lots
- ▨ Denotes Future amenity
- ▨ Residential (by others)
- 1 Future link to Princes Freeway
- 2 Proposed bridge over rail line
- ⦿ Active Open Space
- ⦿ Sporting Space
- ⦿ Child Care/Early Learning
- ⦿ Primary School
- ⦿ High School
- ⦿ Shopping & Convenience
- ⦿ Community Facility
- ⦿ Employment Precinct
- ⦿ Regional Rail Link

The information contained in this plan has been prepared from third party sources current as at the time of publication; no warranty, express or implied, is given as to the accuracy of the information in this plan nor does Lendlease accept any responsibility for any inaccuracies or omissions. Artists' impressions and images are for illustrative purposes and are indicative only. The development may not be identical to the images shown or the development described. Prospective purchasers should make their own enquiries as to the details of the development which may be subject to change without notice. Any information contained in this plan should be read subject to the terms of an agreement of sale. This plan was produced by Harpley, Lendlease Communities (Australia) Limited ABN 88 000 966 085 and is current as at January 2022.



**wilton**  
- Townhomes Collection -

## Make Harpley your lakeside neighbourhood.

Discover a neighbourhood where waterfront living meets the beauty of nature, just 3.5km from the Werribee CBD and 35km south west of Melbourne CBD. This unique masterplanned community by Lendlease is more than a home. It's a place that merges community connection and convenience with everything you need to live well.







# Meet THE DEVELOPER

## Places for everyone.

That's our mission.

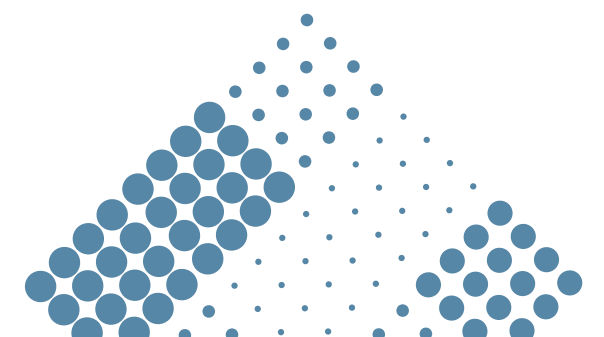
To shape cities, create connected communities and deliver workplaces of the future, right around the world.

As a globally integrated real estate group, we draw on decades of experience and the latest thinking in development, design, placemaking, construction and investments to deliver iconic and enormously successful places. Think Sydney's award-winning Barangaroo precinct, London's Elephant Park urban renewal project, Singapore's Paya Lebar Quarter, Boston's Clippership Wharf and a \$20b urban renewal project comprised of four districts in the San Francisco Bay area. These projects are an example of our \$117b global development pipeline.

In the past, we've helped deliver some of the world's most recognised real estate including Sydney's iconic Opera House, the Tate Britain in London, Kuala Lumpur's Petronas Towers and the National September 11 Memorial and Museum in New York.

We're strongly committed to leaving the world a better place in all that we do. We apply bold thinking and world-class knowledge to solving complex challenges and identifying once-in-a-generation opportunities.

Our 8,500 people in Australia, China, Italy, Japan, Malaysia, Singapore, the UK and the US help create places that set benchmarks in social and environmental sustainability and deliver game-changing experiences and outcomes for governments, partners, communities and people.







SOHO  
LIVING

