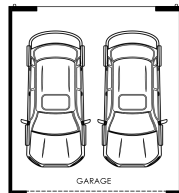


Artist Impression.

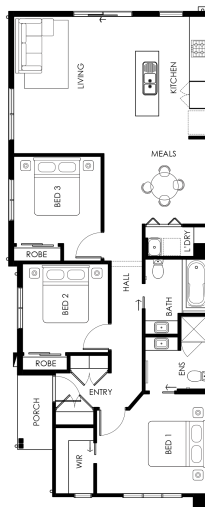
## CAMDEN J CNR

LOT 4381 SHUTTLE WALK, JUBILEE, WYNDHAM VALE

FIXED PRICE

**\$598,950\***

GARAGE


 **3**
 **2**
 **2**

Land Size	229m <sup>2</sup>
-----------	-------------------

Home Size	16SQ
-----------	------

- Architectural façade
- 2590mm Ceiling heights to ground floor
- 40mm Stone benchtops including waterfalls (*Design specific*)
- 40mm stone benchtop to ensuite and bathroom
- Kitchen appliances including oven, cooktop, rangehood and dishwasher
- Premium splashback to kitchen
- Coloured concrete driveway and front path
- Flooring timber laminate and carpet
- Tiled shower bases
- Colorbond sectional garage door with dual remotes
- Ensuite, bathroom and toilet accessories
- Sliding robe doors
- Landscaping to front and rear including letterbox, clothesline and fencing