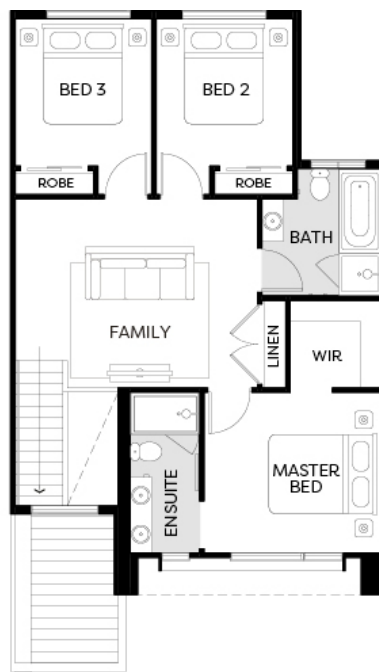
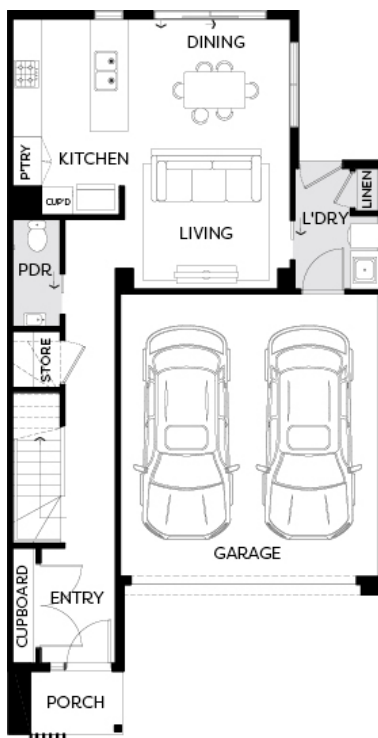




Artist Impression.

OXFORD E | LOT 60733 | CLOVERTON
LOT 60733 INKAP STREET, CLOVERTON, BEVERIDGE

FIXED PRICE

\$549,950*

3 2 2

Land Size 168m²

Home Size 20SQ

- Architectural façade
- 2590mm Ceiling heights to ground floor
- 40mm Stone benchtops including waterfalls (*Design specific*)
- 40mm stone benchtop to ensuite and bathroom
- Fisher & Paykel Kitchen appliances including dishwasher
- Premium splashback to kitchen
- Coloured concrete driveway and front path
- Flooring timber laminate and carpet
- Tiled shower bases
- Colorbond sectional garage door with dual remotes
- Ensuite, bathroom and toilet accessories
- Sliding robe doors
- Landscaping to front and rear including letterbox, clothesline and fencing