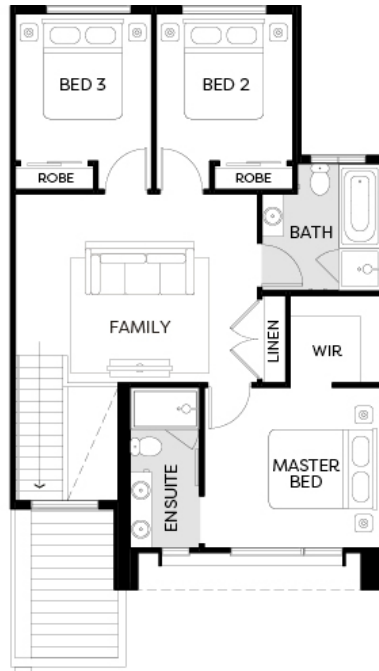
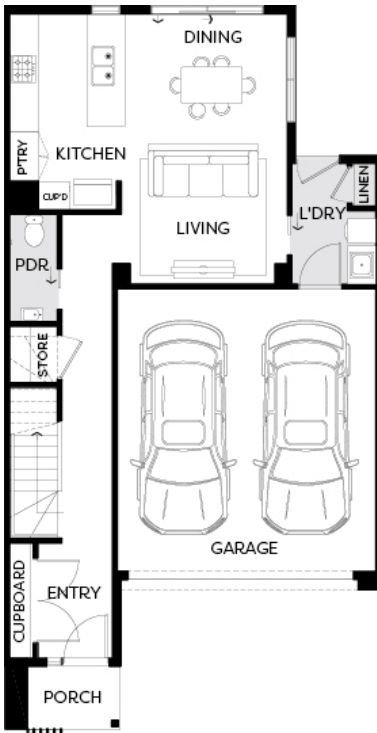




Artist Impression.

OXFORD E | LOT 60733 | CLOVERTON  
LOT 60733 INKAP STREET, CLOVERTON, BEVERIDGE

FIXED PRICE  
**\$542,450\***



3 2 2

Land Size	168m <sup>2</sup>
Home Size	20SQ

- Architectural façade
- 2590mm Ceiling heights to ground floor
- 40mm mineral stone benchtops including waterfalls (*Design specific*)
- 40mm mineral stone benchtop to ensuite and bathroom
- Fisher & Paykel Kitchen appliances including dishwasher
- Premium splashback to kitchen & undermount sink
- Coloured concrete driveway and front path
- Flooring timber laminate and carpet
- Split system Heat/Cool to Living and all bedrooms
- Colorbond sectional garage door with dual remotes
- Sliding robe doors
- All-electric 3 phase power\*
- Landscaping to front and rear including letterbox, clothesline and fencing
- Floor to ceiling tiles to bathroom and ensuite