

The logo for SOHO LIVING is centered within a circular, textured brown shape. The word "SOHO" is written in a large, black, serif font, and the word "LIVING" is written below it in a smaller, gold, sans-serif font.

SOHO
LIVING

The word "Sovereign" is written in a large, white, serif font, centered horizontally. It is overlaid on a large, textured brown rectangular background that occupies the right half of the page. To the left of this background, there are two overlapping circles: a larger green one on top and a smaller red one on the bottom. A thin black line runs diagonally from the top left towards the center, passing through the circles and the word "Sovereign".

Townhome Collection

The logo for YourLand Developments features the company name in a bold, sans-serif font. To the right of the text is a square icon containing a stylized white 'Y' shape on a black background.

YourLand
Developments

The logo for acclaim features the company name in a lowercase, serif font. A vertical line is positioned to the left of the text.

acclaim

The SOHO Living Difference



SOHO Living is redefining modern homeownership with architecturally designed homes and townhomes that combine style, quality and affordability. As a leading medium-density builder under Mirrastone, Victoria's #1 home builder, we bring the strength, experience and trusted delivery of a leading builder to every home we create.

Partnering with Victoria's leading land developers, SOHO Living delivers architecturally designed townhomes within some of the state's most sought-after communities.

Designed for modern living, our townhomes prioritise smart layouts, natural light, and low-maintenance living - perfect for those seeking comfort, style, and convenience in one complete package. With superior inclusions, streamlined processes, and personal support every step of the way, SOHO Living offers a home that's ready when you are.

Every home is built using trusted suppliers and quality materials to ensure lasting value and peace of mind - so you can move in and simply enjoy life.

Sovereign Release Acclaim, Donnybrook by YourLand Developments



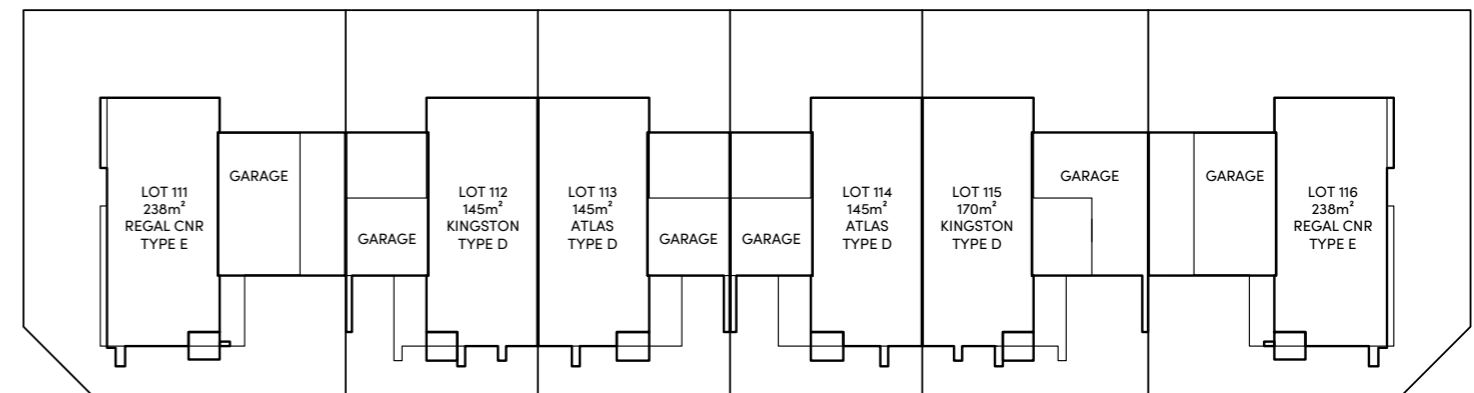
Artist impression.

The Place to Start Living

This limited release of architecturally designed townhomes brings together lifestyle, value and everyday convenience in one considered offering.

Designed for first home buyers, downsizers and investors, each home simplifies modern living without compromise. With a fixed-price, full turn-key approach, everything is included—offering complete clarity with no hidden surprises.

Set within a well-connected, growing community and delivered with faster build times, this is a smart opportunity to secure a home that's ready when you are.





Artist impression.



Artist impression.

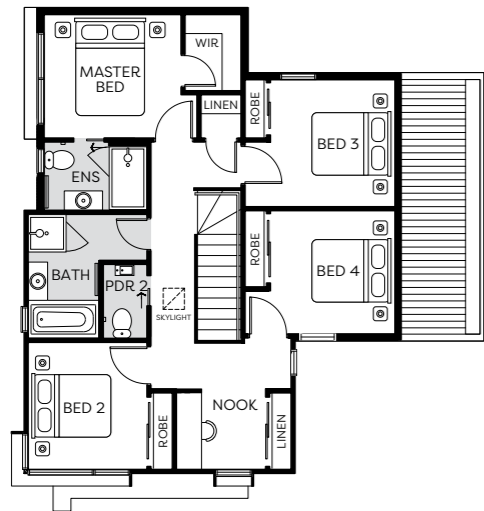
Regal

CORNER - TYPE E

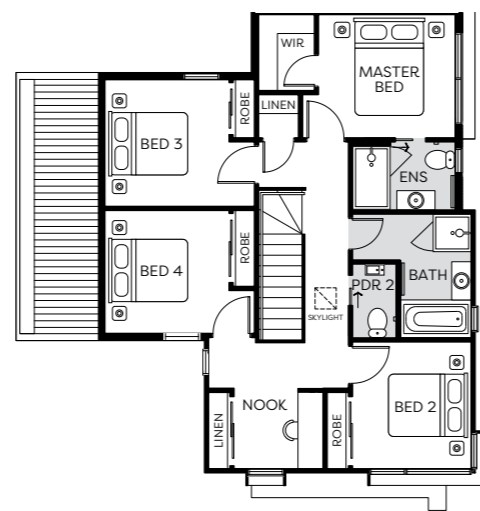
4 BED | 2.5 BATH | 2 CAR

Lot No. 111

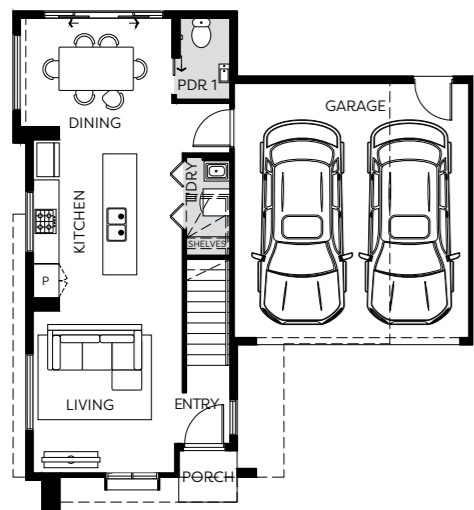
Home Size 18.79 SQ



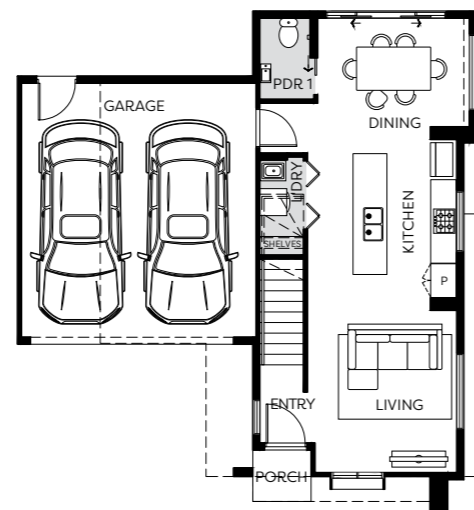
FIRST FLOOR



FIRST FLOOR



GROUND FLOOR



GROUND FLOOR

Artist impression. Images are for illustrative purposes only. This plan and information is indicative only and may vary without notice. Furniture or vehicles are not included in the sale of the lot. The image depicted here is indicative only. Facade finishes and colours may vary. Floorplans may vary depending on the selected façade. Please consult with New Home Consultant and refer to specific plans for details.



Artist impression.

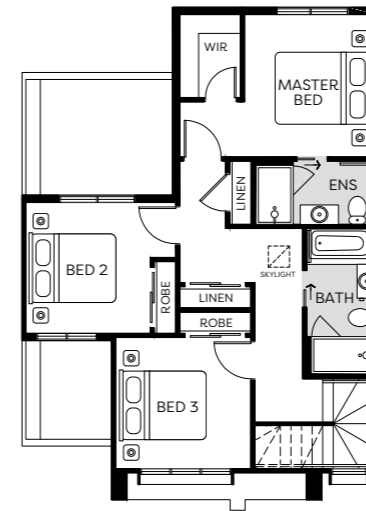
Kingston

TYPE D - SG

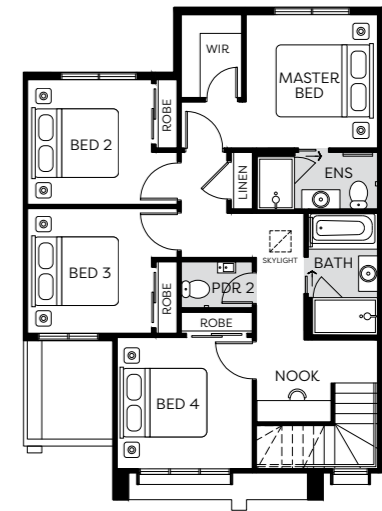
3 BED | 2.5 BATH | 1 CAR

Lot No. 112

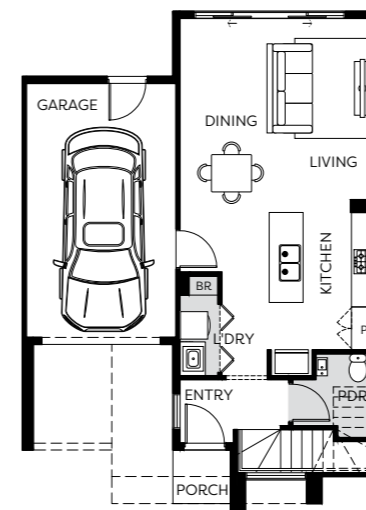
Home Size 16.95 SQ



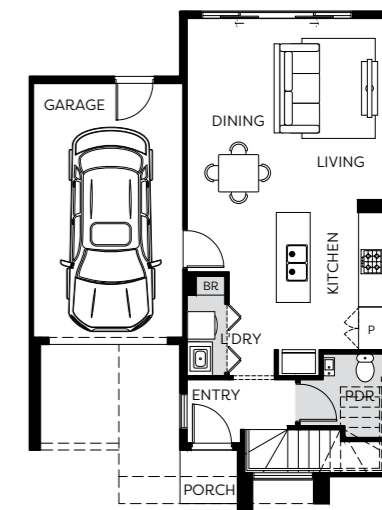
FIRST FLOOR



FIRST FLOOR



GROUND FLOOR



GROUND FLOOR

Artist impression. Images are for illustrative purposes only. This plan and information is indicative only and may vary without notice. Furniture or vehicles are not included in the sale of the lot. The image depicted here is indicative only. Facade finishes and colours may vary. Floorplans may vary depending on the selected façade. Please consult with New Home Consultant and refer to specific plans for details.



Artist impression.

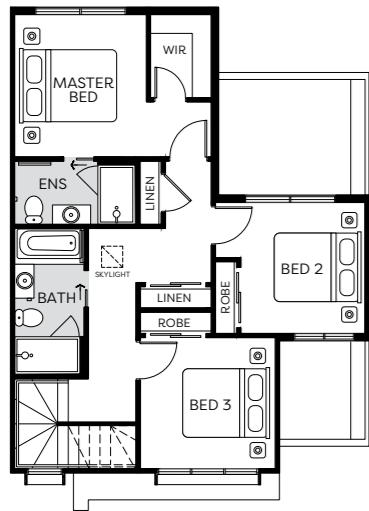
Atlas

TYPE D

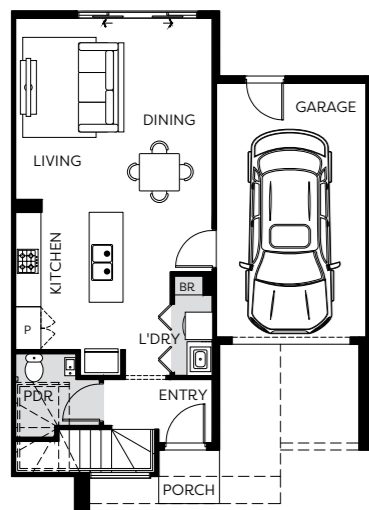
3 BED | 2.5 BATH | 1 CAR

Lot No. 113 & 114*

Home Size 16.02 SQ



FIRST FLOOR



GROUND FLOOR

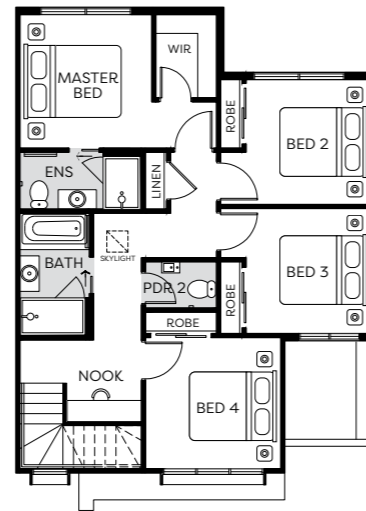
Atlas

TYPE D

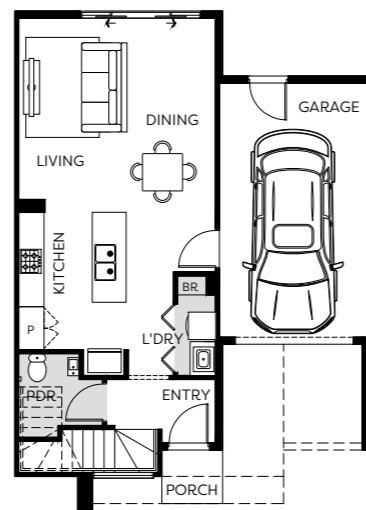
4 BED | 2.5 BATH | 1 CAR

Lot No. 113 & 114*

Home Size 17.4 SQ



FIRST FLOOR



GROUND FLOOR



Artist impression.

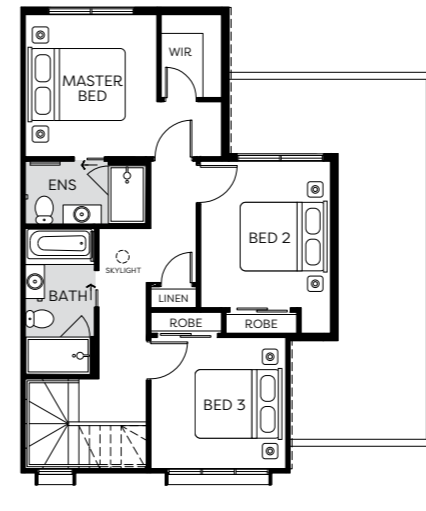
Kingston

TYPE D - DG

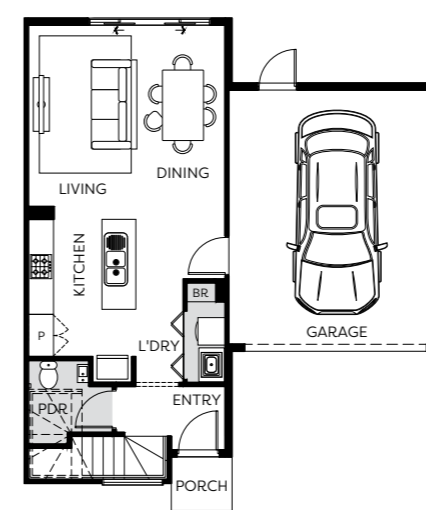
3 BED | 2.5 BATH | 1 CAR

Lot No. 115

Home Size 16.95 SQ



FIRST FLOOR



GROUND FLOOR

*Lot 114 Flipped. Artist impression. Images are for illustrative purposes only. This plan and information is indicative only and may vary without notice. Furniture or vehicles are not included in the sale of the lot. The image depicted here is indicative only. Facade finishes and colours may vary. Floorplans may vary depending on the selected façade. Please consult with New Home Consultant and refer to specific plans for details.



Images are for illustrative purposes only.

Artist impression. Images are for illustrative purposes only. This plan and information is indicative only and may vary without notice. Furniture or vehicles are not included in the sale of the lot. The image depicted here is indicative only. Facade finishes and colours may vary. Floorplans may vary depending on the selected façade. Please consult with New Home Consultant and refer to specific plans for details.

Townhome Inclusions



Internal

Detail

- 2590mm ceiling height (nominal) to single storey with 75mm cove cornice. 2590mm ceiling height (nominal) to ground floor of double storey homes, 2440mm ceiling height (nominal) to first floor, 75mm cove cornice throughout.
- Flush panel Honeycomb Core 2040mm high doors to single storey, 2040mm high to ground floor and first floor of double storey.
- Passage set, chrome levers throughout.
- 67x18mm square edge primed MDF skirtings.
- 67x18mm square edge primed MDF Architraves.
- Ceiling Plaster. 10mm plasterboard finish.
- Plasterboard 10mm thick wall plaster. Water resistant plasterboard to Ensuite, Bathroom and above Laundry trough.

Paint

- Two coats of paint for Internal and External.
- Two coats of paint for Woodwork and Skirting.

Tiling

- Ceramic floor tiles selected from SOHO Living colour scheme. 450x450 to Laundry, Ensuite, Bathroom, WC, and Powder Room, shower recess and above bath.
- Ceramic wall tiles selected from SOHO Living colour scheme.
- Floor to ceiling tiles with square set cornice to Bathroom and Ensuite.

Floor Coverings

- Carpet to Bedrooms, WIR, Activity and Staircase in line with manufacturers guidelines, selected from SOHO Living colour scheme.
- Timber look laminate flooring to Entry, Kitchen, WIP, Meals, Family, Living, Rear Hallway, Lounge and Study in line with manufacturers guidelines, selected from SOHO Living colour scheme.

Storage

- One white melamine shelf and hanging rail to robes.
- One white melamine shelf and hanging rail to walk in robe.
- Four white melamine shelves to pantry/linen.
- One white melamine shelf to broom (Design specific).

Stairs (Double Storey Homes Designs)

- Plaster dwarf walls to stairs and void areas with painted timber handrail (refer to staircase layout).

Kitchen

- European inspired oven 600mm.
- European inspired 600mm induction cooktop.
- European inspired rangehood 600mm stainless steel canopy rangehood.
- European inspired dishwasher 600mm.
- Stainless steel double undermount bowl sink.
- Pull out tap in chrome finish.
- Engineered Caesarstone Mineral 40mm benchtop. Selected as per SOHO Living colour scheme.
- Splashback selected as per SOHO Living colour scheme (White subway tiles to Regent and Ruthven home designs).

Bathroom, Ensuite, Powder Room & WC

- Mirror with polished edges to full width of vanities sitting on tiled splashback.
- Ceramic abovement basin, No tap hole low profile inset basin (white), chrome waste.
- High Quality Vanity unit.
- Engineered Caesarstone Mineral 40mm benchtop. Selected as per SOHO Living colour scheme.
- 1525/1675mm acrylic bath (white) in tiled podium. (Design Specific).
- Ceramic tiled shower base with grated drain. Selected as per SOHO Living colour scheme.
- 1950mm high semi-frameless shower screens with pivot door and clear laminated glass.
- Handheld shower on rail for Bathroom and Ensuite.
- Bath (wall mounted tap/outlet) – straight wall bath outlet and wall mixer tap.
- Basin (wall mounted tap/outlet) – wall mixer tap.
- Toilet roll holders chrome and double towel rails.
- China toilet suite in white with soft close seat.

Laundry

- Trough (Design specific).
- Up to 800mm wide fully lined modular cabinet or Stainless steel 42L Tub and Cabinet (Design Specific) for Base Cupboard. Refer to working drawings.
- Laminate bench top with square edge. (Design Specific).
- Sink mixer in chrome finish.

Energy Efficiency, Heating & Cooling

- Panel heating unit installed to living areas and bedrooms (excludes wet areas) as per manufacturers/suppliers recommendations for home size.
- Insulation batts to home to comply with 6 star Energy Rating requirements.

Electrical

- Recessed LED downlight in white non-metallic polyamide housing with diffuser.
- Two external flood light wall mounted light fitting. (Design Specific).
- White surround, double power points throughout excluding dishwasher, microwave, and refrigerator provision, where a single power point is provided.
- Hardwired smoke detector with battery backup.
- Exhaust Fans above all showers and toilet not opening to outside air, 250mm with self-sealing air flow draft stoppers.
- TV Points to Family and Master Bedroom.
- Telephone Point to Kitchen and Master Bedroom.
- Residual Current Devices safety switch and circuit breakers to meter box.

It's all included!



External

Doors and Windows

- Front Entry Door with colour to be selected from SOHO Living colour scheme.
- Powder coated aluminum windows. (Design Specific).
- Aluminum powder coated sliding door. Colour to be selected from SOHO Living colour scheme.
- Locks to all openable windows and sliding doors keyed alike.

Façade and detail

- Light weight cladding.
- Acrylic texture coating render. Colour to be selected from SOHO Living colour scheme.
- Infills Over Windows & doors.
- Colorbond/Concrete Roof Tiles to be selected from SOHO Living colour scheme (Design Specific).
- Metal gutter, fascia and flashings to be Colorbond finish.
- 22.5 degree Roof Pitch (Design Specific).

Frame

- Stabilised timber wall frame throughout at 450mm centres to ground floor of double storey homes, 600mm centres to single storey homes and first floor of double storey homes. Timber Sizes to be in accordance with AS1684 Timber Framing Code.
- Engineer designed stabilised timber roof trusses at 600mm centres.

Garage

- Up to 2100mm high x 4800mm wide Colorbond sectional garage door in flat line profile (Design Specific).
- Remote control unit to front garage door with 2 handsets.

Outdoor

- Landscaping to include garden and plants to the front and rear. Instant turf to rear yard. Or as per landscape design on drawings.
- Timber paling/Colorbond fencing including wing fence and gate to suit estate design covenants.
- Coloured concrete to driveway, front path and rear outdoor living.
- Precast concrete letterbox with colour to match house.
- Colorbond fold out clothesline in rear yard.

Site Works

- Concrete waffle pod slab, engineer designed "M" up to "P" class*, maximum 300mm site fall over the building platform, no existing fill. Slab costs will be adjusted if founding conditions differ.

Compaction report "site specific" is required or else other cost incurred.

Based on land size up to 600m², and a maximum building setback of 6m (subject to planning authority).

Engineer design surface drainage, including silt pits with grated covers, connected to stormwater, 2x flexible couplings to sewer, engineer design and certification.

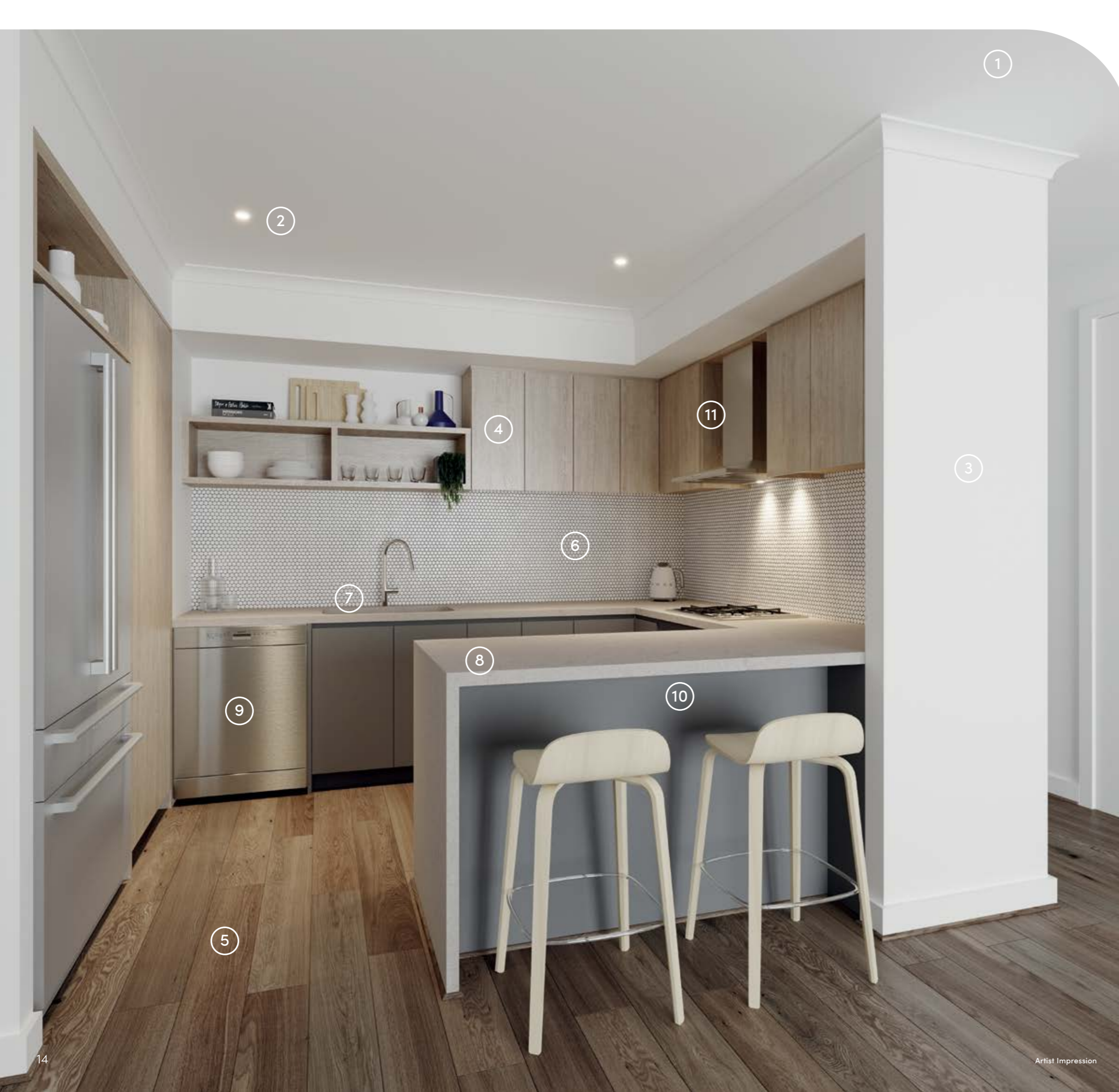
Rock removal is included, however any rock requiring explosives or core drilling will be an additional charge.

Connections

- Underground electricity, sewer and storm water included.
- Three phase power
- Telephone conduit and draw cable from the supply pit.
- Telephone and electricity fees by owner.
- NBN ready.

Plumbing

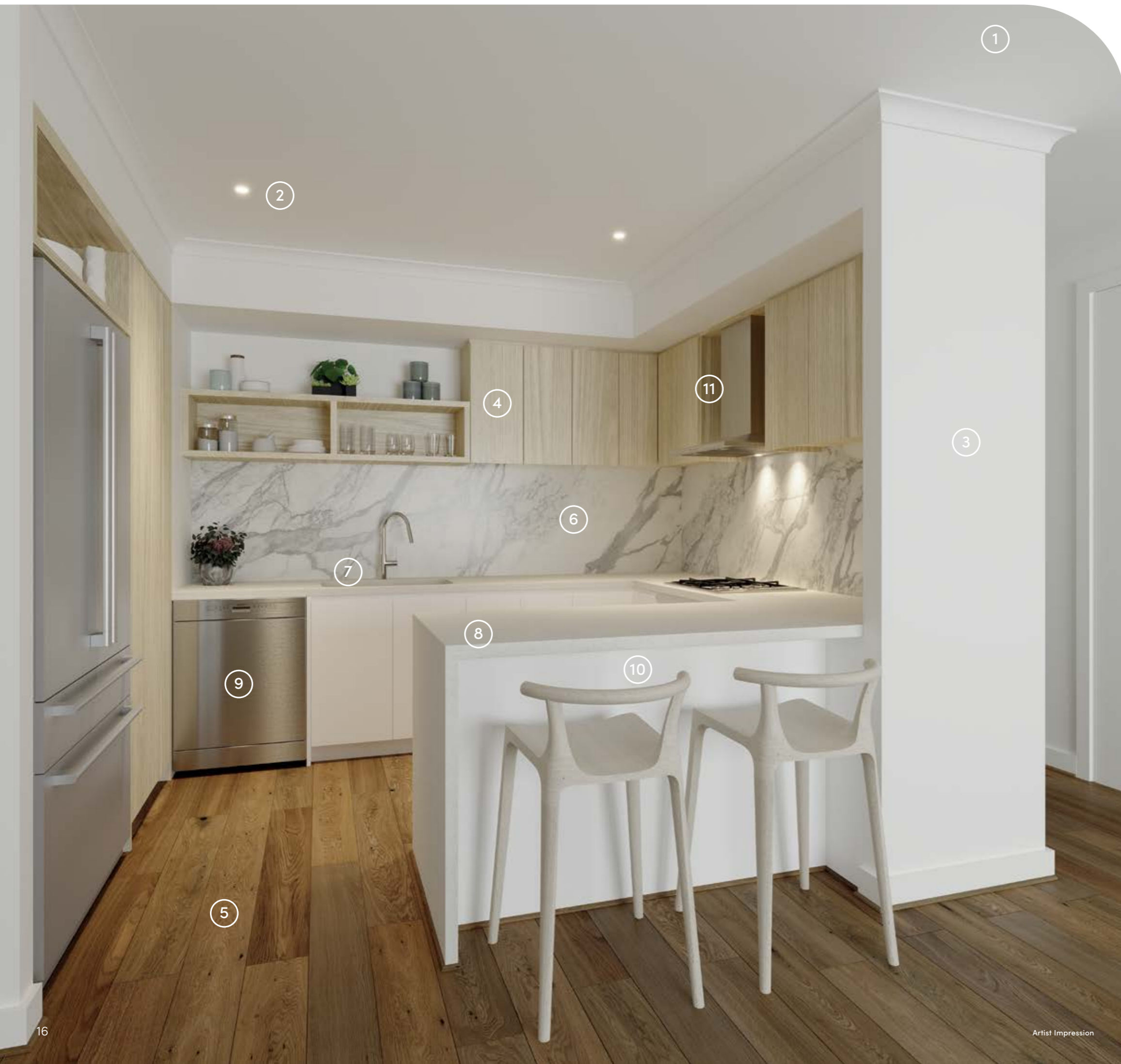
- Two garden taps, one located to the front water meter and one adjacent to the external Laundry door or at the rear (Design Specific).
- Hot water unit in accordance with estate design guidelines.



KITCHEN

Colour Scheme Urban

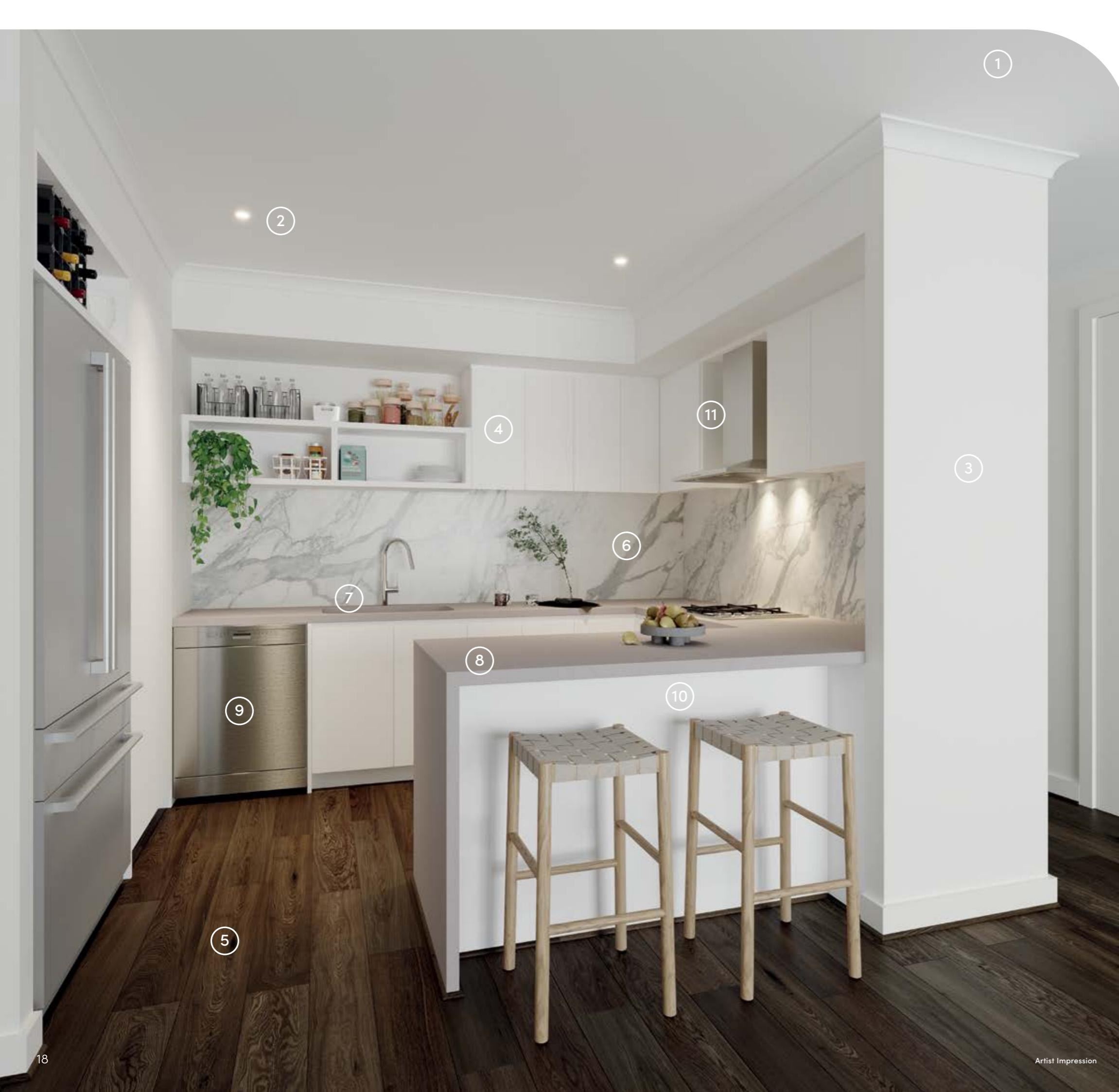
1. 2590mm ceilings to ground floor
2. LED Downlights
3. Paint 'Winter Mushroom'
4. Overhead Cabinets 'Royal Oak'
5. Quality Timber Laminate Floor 'Rustic Maize'
6. Premium Splashback 'Mod Penny Round White Gloss Mosaic'
7. Chrome pull out tap & stainless steel double undermount sink
8. 40mm Caesarstone Mineral benchtop with waterfall edge 'Oyster'
9. European inspired dishwasher
10. Base Cabinets 'Stormcloud'
11. European inspired 600mm rangehood and cooktop, European inspired 600mm oven



KITCHEN

Colour Scheme Coastal

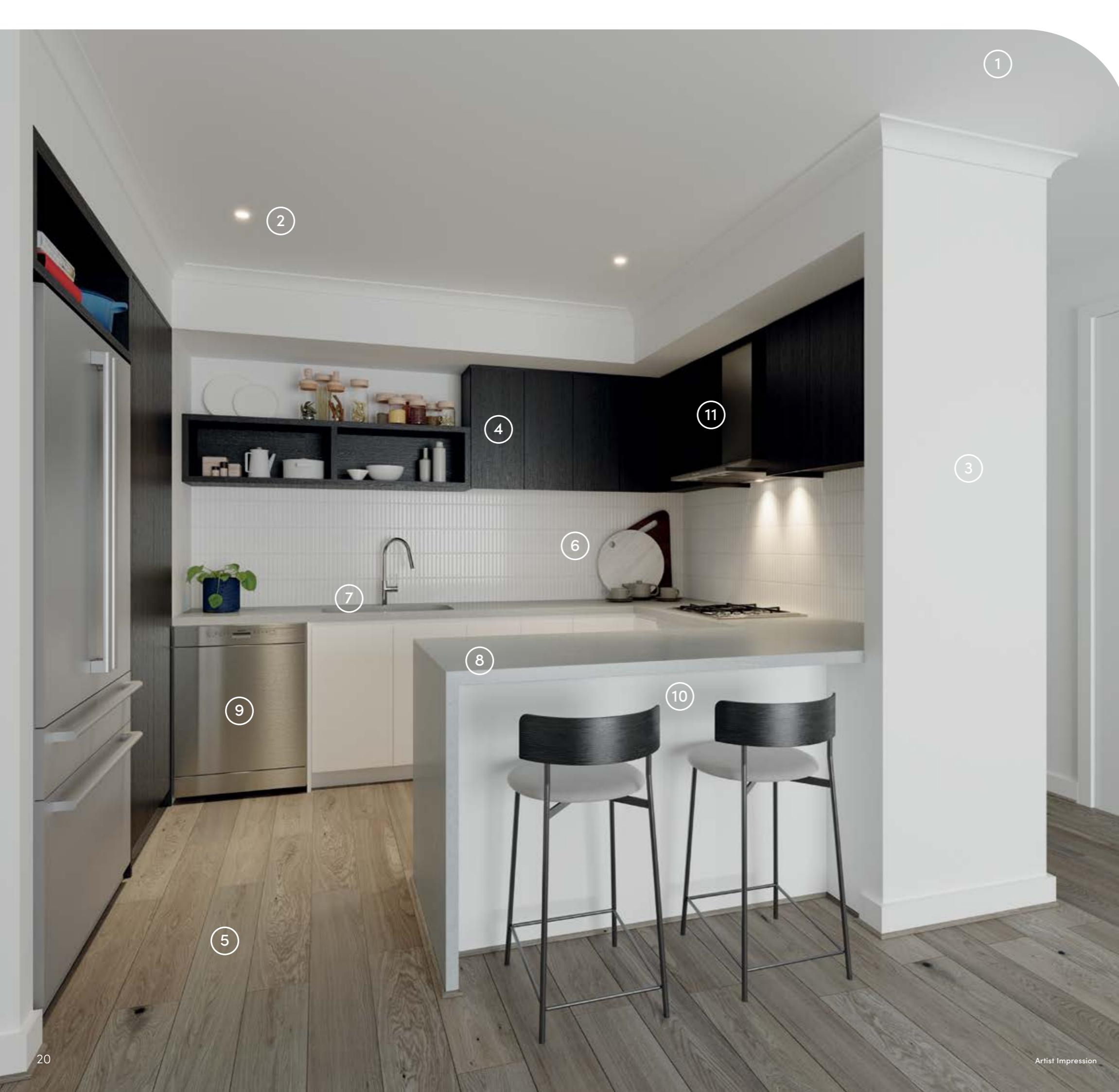
1. 2590mm ceilings to ground floor
2. LED Downlights
3. Paint 'SOHO White'
4. Overhead Cabinets 'Bleached Elm'
5. Quality Timber Laminate Floor 'Rustic Oatmeal'
6. Premium Splashback 'Grander Atlantis White Silk'
7. Chrome pull out tap & stainless steel double undermount sink
8. 40mm Caesarstone Mineral benchtop with waterfall edge 'Snow'
9. European inspired dishwasher
10. Base Cabinets 'Calm White'
11. European inspired 600mm rangehood and cooktop, European inspired 600mm oven



KITCHEN

Colour Scheme Echo

1. 2590mm ceilings to ground floor
2. LED Downlights
3. Paint 'Designer White'
4. Overhead Cabinets 'Calm White'
5. Quality Timber Laminate Floor 'Rustic Rye'
6. Premium Splashback 'Grander Atlantis Marble Gold Silk'
7. Chrome pull out tap & stainless steel double undermount sink
8. 40mm Caesarstone Mineral benchtop with waterfall edge 'Raw Concrete'
9. European inspired dishwasher
10. Base Cabinets 'Calm White'
11. European inspired 600mm rangehood and cooktop, European inspired 600mm oven



KITCHEN

Colour Scheme Nova

1. 2590mm ceilings to ground floor
2. LED Downlights
3. Paint 'Winter Mushroom'
4. Overhead Cabinets 'Black Birchply'
5. Quality Timber Laminated Floor 'Rustic Buckwheat'
6. Premium Splashback 'Mod Fingers White Matt Mosaic'
7. Chrome pull out tap & stainless steel double undermount sink
8. 40mm Caesarstone Mineral benchtop with waterfall edge 'Alpine Mist'
9. European inspired dishwasher
10. Base Cabinets 'Calm White'
11. European inspired 600mm rangehood and cooktop, European inspired 600mm oven



KITCHEN

Colour Scheme Botanic

1. 2590mm ceilings to ground floor
2. LED Downlights
3. Paint 'Floral White'
4. Overhead Cabinets 'Classic Oak'
5. Quality Timber Laminate Floor 'Rustic Maize'
6. Premium Splashback 'Safi White Structured Gloss'
7. Chrome pull out tap & stainless steel double undermount sink
8. 40mm Caesarstone Mineral benchtop with waterfall edge 'Organic White'
9. European inspired dishwasher
10. Base Cabinets 'Alpine Mist'
11. European inspired 600mm rangehood and cooktop, European inspired 600mm oven



Artist impression.

Acclaim is where a thoughtfully designed masterplan meets a connected, vibrant community lifestyle. This is more than a place to live – it's a new benchmark for connection and convenience – where every detail has been designed to support a lifestyle grounded in opportunity, pride and purpose. Acclaim is your chance to live close to what matters and take the first step towards a life well built.



Sovereign Townhome Collection

Thoughtful
design. Real
opportunity.




















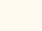
The Acclaim masterplan has been thoughtfully designed to create a neighbourhood that feels connected, balanced, and welcoming. Tree-lined streets and generous green spaces set the scene for families to grow and for everyday moments to bring people together.

Walking and cycling paths link homes to all the proposed amenities the community has to offer, making life simple and convenient. This is a masterplan designed not just for today, but for generations to come.

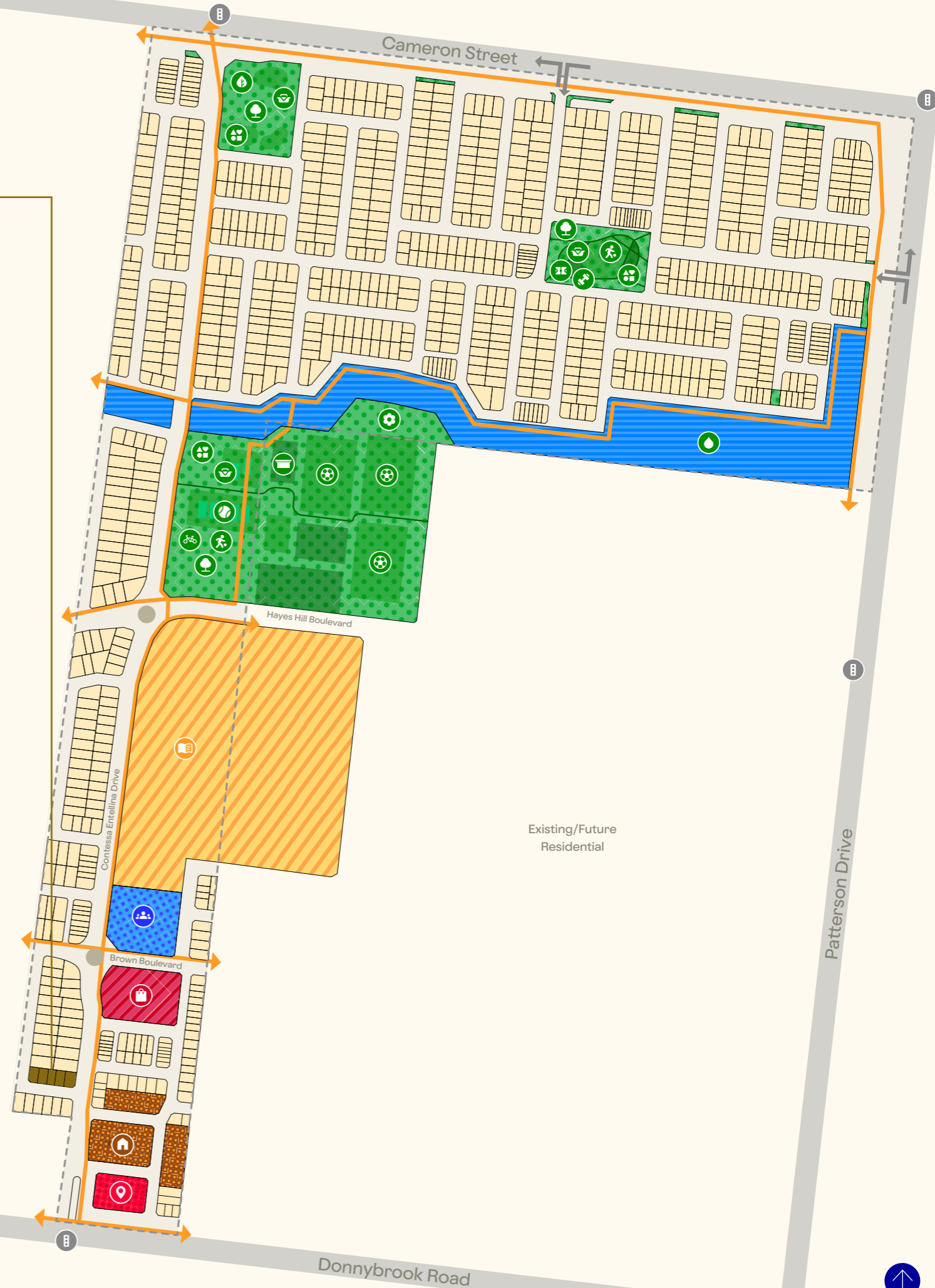
Disclaimer: The information, images, and descriptions contained in this Masterplan are provided for general promotional purposes only and should be used as a general guide only. The representations of the development are artistic impressions only. While this Masterplan reflects the proposed development at the time this Masterplan was created, all renders, plans, dimensions, specifications, and other details are indicative only and subject to change without notice. Actual construction outcomes may differ due to design development, regulatory requirements, or other factors. While reasonable care has been taken to ensure the accuracy of the information provided, 915 DBR Pty Ltd (ABN: 35 324 767 171), its agents, officers, employees and its associated entities make no representation or warranty as to the completeness or suitability of the information for any particular purpose. Nothing in this disclaimer is intended to exclude, restrict or modify any rights or remedies a consumer may have under the Competition and Consumer Act 2010 (Cth) or any other applicable legislation which cannot be excluded by law.

Existing/Future
Residential

Legend

-  Playground
-  Park
-  Nature Reserve
-  Fitness Equipment
-  Wetland & Waterways
-  Soccer Pitch
-  Kick-about-space
-  Tennis Court
-  Community Garden
-  Picnic & Shelter
-  Multipurpose Court
-  Sports Pavilion
-  Bicycle Repair Station
-  Community Centre
-  P-12 Government School
-  Shopping Village
-  Acclaim Sales Office
-  Display Village
-  Traffic Lights
-  Shared Off-Road Walking & Cycling Paths

Map not to scale.



Existing/Future
Residential



NORTH



Artist impression.



Image courtesy of Acclaim.



Image courtesy of Acclaim.

A life of connection.

Life at Acclaim is shaped by moments that matter – a morning walk to grab a coffee, kids riding bikes along quiet streets, neighbours pausing for a chat on the way to the proposed local shopping village.

Here, connection is effortless, and convenience is part of the everyday rhythm. Designed with care and vision, Acclaim is where place, people and purpose come together beautifully.



Artist impression.



Artist impression.



Image courtesy of Acclaim.



soholiving.com.au



Acclaim Disclaimer: While this Brochure reflects the proposed development at the time this Brochure was created, the information it contains should be used as a general guide only. The representations of the development are artistic impressions only. In particular, the designs, plans, images, view lines, dimensions, layout, sizes and areas, facilities, amenities, infrastructure, number of lots, the configuration of these and other information contained in this Brochure, the marketing display suite, internet site, videos, computer applications and all plans and schedules (Property Information) may change depending on a range of variable factors including, but not limited to, council building approvals and planning consents, market conditions, finance and government and municipal requirements. As a result, the development information is preliminary only and subject to change without notice as the development progresses. This brochure does not constitute part of an offer or contract. Furniture and home decorator items are for illustrative purposes only and are not included in the purchase price. We recommend that you undertake your own enquiries, obtain independent legal advice and confirm the current development information at the time you enter into any purchase contract. 915 DBR Pty Ltd (ABN: 35 324 767 171), its agents, officers, employees and its associated entities do not make any representations or give any warranties that the information set out in this Brochure is or will remain accurate or complete at all times and disclaim all liability for harm, loss, costs or damage which arises in connection with any use or reliance on the information. Prospective purchasers should make further enquiries and rely on the contract of sale and registered plan of subdivision for accurate information. Nothing in this disclaimer is intended to exclude, restrict or modify any rights or remedies a consumer may have under the Competition and Consumer Act 2010 (Cth) or any other applicable legislation which cannot be excluded by law.

SOHO Living Disclaimer: The information contained in this promotional material including statements, figures, images, and representations are indicative only, are current on the date of publication, and may change without notice. Images may include artist impressions and computer-generated images that are for general illustration purposes only, which may not be to scale and may differ from the final built form. Actual lots, stages, facilities, amenities, infrastructure, and their configuration are subject to statutory approval and may change. All persons should seek their own independent legal, financial, and real estate advice. This document is not a contract and is not binding. Please ask your agent for detailed home designs specific drawings for full extent of inclusions, features, pricing and specifications of your preferred SOHO Living home design, colour scheme and or facade. All information contained within this brochure is accurate at time of April 2026. The building practitioner is by SOHO Living Australia Pty Ltd trading as SOHO Living, registration number CDB-U 50036.