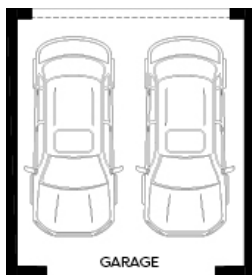




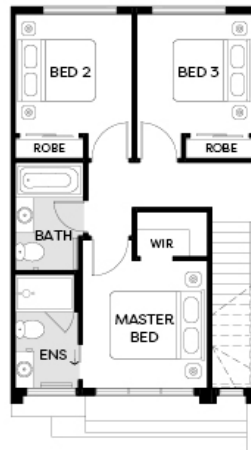
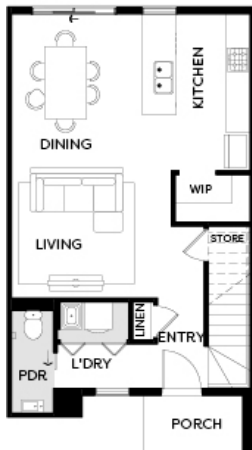
Artist Impression

WESTGARTH E | LOT 855 | OLIVINE  
 LOT 855 LILY CRESCENT, OLIVINE, DONNYBROOK

FIXED PRICE  
**\$569,950\***



Land Size	156m <sup>2</sup>
Home Size	175SQ



- Architectural façade
- 2590mm Ceiling heights to ground floor
- 40mm mineral stone benchtops including waterfalls (*Design specific*)
- 40mm mineral stone benchtop to ensuite and bathroom
- Fisher & Paykel Kitchen appliances including dishwasher
- Premium splashback to kitchen & undermount sink
- Coloured concrete driveway and front path
- Flooring timber laminate and carpet
- Split system Heat/Cool to Living and all bedrooms
- Colorbond sectional garage door with dual remotes
- Sliding robe doors
- All-electric 3 phase power\*
- Landscaping to front and rear including letterbox, clothesline and fencing
- Floor to ceiling tiles to bathroom and ensuite