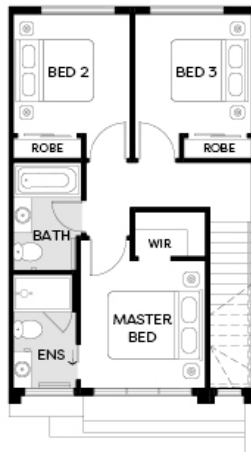
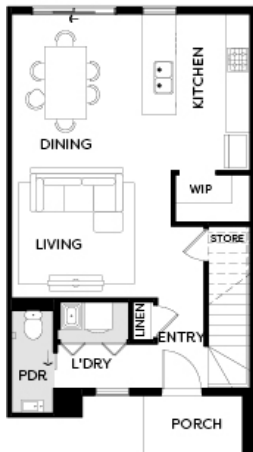
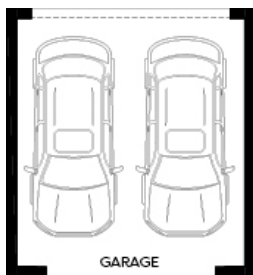




Artist Impression.

WESTGARTH D | LOT 852 | OLIVINE
 LOT 852 LILY CRESCENT, OLIVINE, DONNYBROOK

FIXED PRICE
\$569,950*



Land Size	156m ²
Home Size	17SQ

- Architectural façade
- 2590mm Ceiling heights to ground floor
- 40mm mineral stone benchtops including waterfalls (*Design specific*)
- 40mm mineral stone benchtop to ensuite and bathroom
- Fisher & Paykel Kitchen appliances including dishwasher
- Premium splashback to kitchen & undermount sink
- Coloured concrete driveway and front path
- Flooring timber laminate and carpet
- Split system Heat/Cool to Living and all bedrooms
- Colorbond sectional garage door with dual remotes
- Sliding robe doors
- All-electric 3 phase power*
- Landscaping to front and rear including letterbox, clothesline and fencing
- Floor to ceiling tiles to bathroom and ensuite