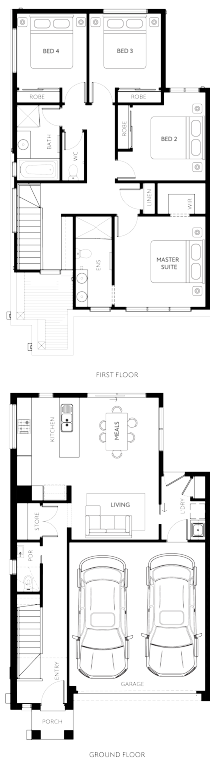




Artist Impression.

NEXUS CNR | LOT 51 | ROSELLE
 LOT 51 IVY CRESCENT, ROSELLE, SPRINGVALE SOUTH

FIXED PRICE
\$1,019,950*



4 2 2

Land Size	158m ²
Home Size	20SQ

- Coloured concrete driveway and front path
- Landscaping to front and rear, including letterbox, clothesline and fencing
- Colorbond sectional garage door
- 2590mm ceiling height to ground floor
- Quality flooring throughout
- Reverse cycle split system (heating and cooling) to living and master bedroom
- 20mm stone benchtops to kitchen, ensuite and bathroom
- Fisher & Paykel kitchen appliances, including dishwasher
- Overhead cabinetry to kitchen
- Ceramic tiled shower base