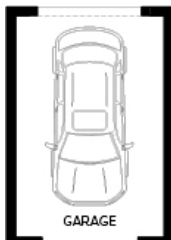




Artist Impression.

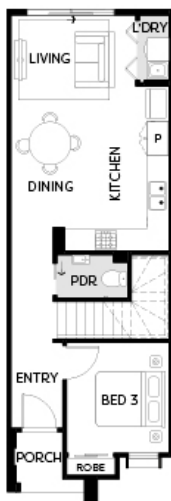
**COLLINS MIDLAND D | SMITHS LANE**  
 LOT 3145 HARDY'S ROAD, SMITHS LANE, CLYDE NORTH

FIXED PRICE  
**\$569,950\***



3 2.5 1

<b>Land Size</b>	133m <sup>2</sup>
<b>Home Size</b>	137SQ



- Architectural façade
- 2590mm Ceiling heights to ground floor
- 40mm Stone benchtops including waterfalls (*Design specific*)
- 40mm stone benchtop to ensuite and bathroom
- Fisher & Paykel Kitchen appliances including dishwasher
- Premium splashback to kitchen
- Coloured concrete driveway and front path
- Flooring timber laminate and carpet
- Tiled shower bases
- Colorbond sectional garage door with dual remotes
- Ensuite, bathroom and toilet accessories
- Sliding robe doors
- Landscaping to front and rear including letterbox, clothesline and fencing